



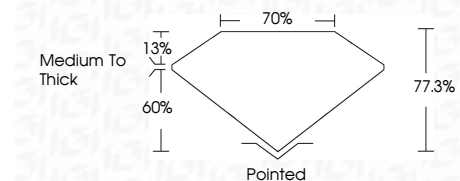
ELECTRONIC COPY

LG786644531 Report verification at igi.org



May 28, 2026 IGI Report Number LG786644531 Description LABORATORY GROWN DIAMOND Shape and Cutting Style HEXAGONAL MODIFIED BRILLIANT Measurements 11.61 X 5.96 X 4.61 MM

GRADING RESULTS Carat Weight 2.02 CARATS Color Grade E Clarity Grade VVS 2



ADDITIONAL GRADING INFORMATION Polish EXCELLENT Symmetry EXCELLENT Fluorescence NONE Inscription(s) LG786644531 Comments: This Laboratory Grown Diamond was created by Chemical Vapor Deposition (CVD) growth process. Type IIa



May 28, 2026 IGI Report No LG786644531 HEXAGONAL MODIFIED BRILLIANT 2.02 CARATS E VVS 2 77.3% 70% Medium To Thick Pointed EXCELLENT EXCELLENT NONE LG786644531 Comments: This Laboratory Grown Diamond was created by Chemical Vapor Deposition (CVD) growth process. Type IIa

LABORATORY GROWN DIAMOND REPORT

May 28, 2026 IGI Report Number LG786644531 Description LABORATORY GROWN DIAMOND Shape and Cutting Style HEXAGONAL MODIFIED BRILLIANT Measurements 11.61 X 5.96 X 4.61 MM

GRADING RESULTS

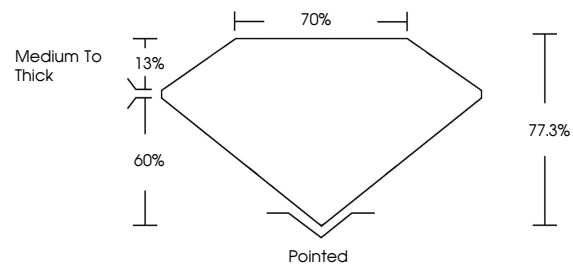
Carat Weight 2.02 CARATS Color Grade E Clarity Grade VVS 2

ADDITIONAL GRADING INFORMATION

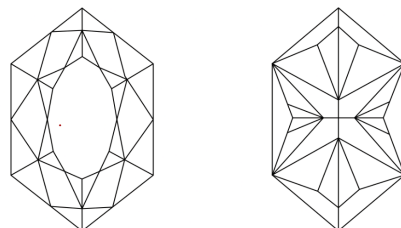
Polish EXCELLENT Symmetry EXCELLENT Fluorescence NONE Inscription(s) LG786644531

Comments: This Laboratory Grown Diamond was created by Chemical Vapor Deposition (CVD) growth process. Type IIa

PROPORTIONS

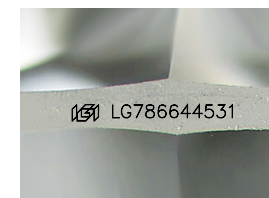


CLARITY CHARACTERISTICS



KEY TO SYMBOLS

Red symbols indicate internal characteristics. Green symbols indicate external characteristics.



Sample Image Used

COLOR

D E F G H I J Faint Very Light Light

CLARITY

FL IF VVS 1-2 VS 1-2 SI 1-2 I 1-3 Flawless Internally Flawless Very Very Slightly Included Very Slightly Included Slightly Included Included

