



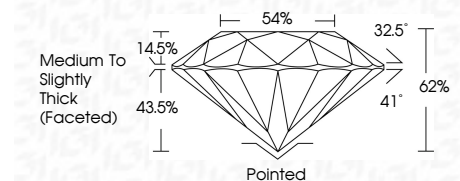
**ELECTRONIC COPY**

LG786644520  
Report verification at igi.org



May 28, 2026  
IGI Report Number **LG786644520**  
Description **LABORATORY GROWN DIAMOND**  
Shape and Cutting Style **ROUND BRILLIANT**  
Measurements **8.08 - 8.10 X 5.01 MM**

**GRADING RESULTS**  
Carat Weight **2.00 CARATS**  
Color Grade **D**  
Clarity Grade **VS 1**  
Cut Grade **EXCELLENT**



**ADDITIONAL GRADING INFORMATION**  
Polish **EXCELLENT**  
Symmetry **EXCELLENT**  
Fluorescence **NONE**  
Inscription(s) **IGI LG786644520**  
Comments: As Grown - No indication of post-growth treatment.  
This Laboratory Grown Diamond was created by High Pressure High Temperature (HPHT) growth process.  
Type II



May 28, 2026  
IGI Report No LG786644520  
**ROUND BRILLIANT**  
2.00 CARATS  
D  
8.08 - 8.10 X 5.01 MM  
Carat Weight  
Color Grade  
Clarity Grade  
Cut Grade  
Depth  
Table  
Girdle  
Culet  
Polish  
Symmetry  
Fluorescence  
Inscription(s)  
**2.00 CARATS**  
**D**  
**EXCELLENT**  
**VS 1**  
**EXCELLENT**  
**62%**  
**54%**  
Medium To Slightly Thick (Faceted)  
**Pointed**  
**EXCELLENT**  
**EXCELLENT**  
**NONE**  
IGI LG786644520  
Comments: As Grown - No indication of post-growth treatment.  
This Laboratory Grown Diamond was created by High Pressure High Temperature (HPHT) growth process.  
Type II

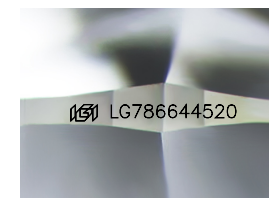
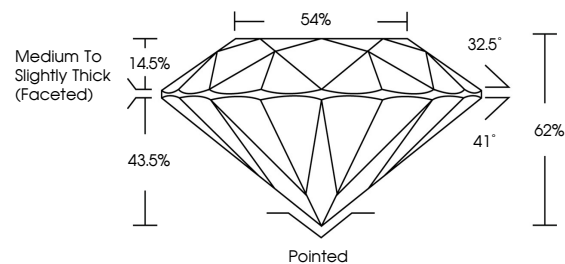
May 28, 2026  
IGI Report Number **LG786644520**  
Description **LABORATORY GROWN DIAMOND**  
Shape and Cutting Style **ROUND BRILLIANT**  
Measurements **8.08 - 8.10 X 5.01 MM**

**GRADING RESULTS**  
Carat Weight **2.00 CARATS**  
Color Grade **D**  
Clarity Grade **VS 1**  
Cut Grade **EXCELLENT**

**ADDITIONAL GRADING INFORMATION**  
Polish **EXCELLENT**  
Symmetry **EXCELLENT**  
Fluorescence **NONE**  
Inscription(s) **IGI LG786644520**

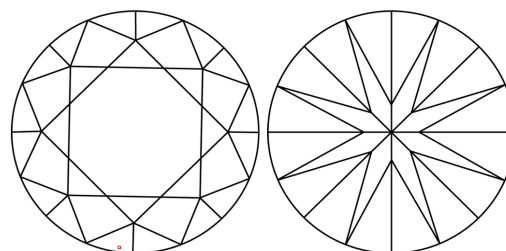
Comments: As Grown - No indication of post-growth treatment.  
This Laboratory Grown Diamond was created by High Pressure High Temperature (HPHT) growth process.  
Type II

**PROPORTIONS**



Sample Image Used

**CLARITY CHARACTERISTICS**



**KEY TO SYMBOLS**

Red symbols indicate internal characteristics.  
Green symbols indicate external characteristics.

**COLOR**

D E F G H I J Faint Very Light Light

**CLARITY**

FL	IF	VS <sup>1-2</sup>	VS <sup>1-2</sup>	SI <sup>1-2</sup>	I <sup>1-3</sup>
Flawless	Internally Flawless	Very Very Slightly Included	Very Slightly Included	Slightly Included	Included

