



**ELECTRONIC COPY**

LG786644431  
Report verification at igi.org



April 20, 2026  
IGI Report Number **LG786644431**  
Description **LABORATORY GROWN DIAMOND**

Shape and Cutting Style **OCTAGONAL STEP CUT**  
Measurements **7.35 X 7.29 X 4.65 MM**

**GRADING RESULTS**

Carat Weight **2.00 CARATS**  
Color Grade **FANCY VIVID PINK**  
Clarity Grade **VS 2**

April 20, 2026  
IGI Report Number **LG786644431**  
Description **LABORATORY GROWN DIAMOND**  
Shape and Cutting Style **OCTAGONAL STEP CUT**  
Measurements **7.35 X 7.29 X 4.65 MM**

**GRADING RESULTS**

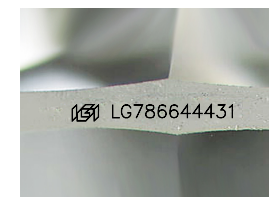
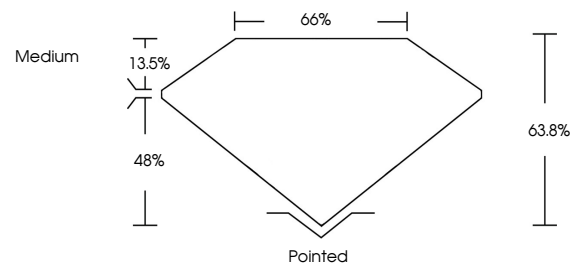
Carat Weight **2.00 CARATS**  
Color Grade **FANCY VIVID PINK**  
Clarity Grade **VS 2**

**ADDITIONAL GRADING INFORMATION**

Polish **VERY GOOD**  
Symmetry **VERY GOOD**  
Fluorescence **SLIGHT**  
Inscription(s) **IGI LG786644431**

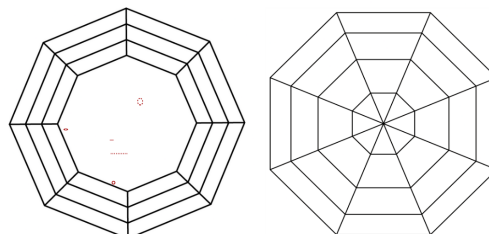
Comments: This Laboratory Grown Diamond was created by Chemical Vapor Deposition (CVD) growth process.  
Indications of post-growth treatment.

**PROPORTIONS**



Sample Image Used

**CLARITY CHARACTERISTICS**



**KEY TO SYMBOLS**

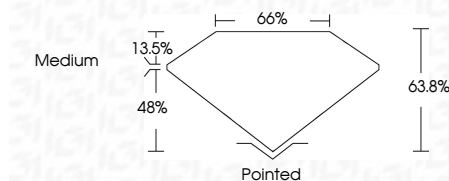
Red symbols indicate internal characteristics.  
Green symbols indicate external characteristics.

**COLOR**

D E F G H I J Faint Very Light Light

**CLARITY**

FL	IF	VS <sup>1-2</sup>	VS <sup>1-2</sup>	SI <sup>1-2</sup>	I <sup>1-3</sup>
Flawless	Internally Flawless	Very Very Slightly Included	Very Slightly Included	Slightly Included	Included



**ADDITIONAL GRADING INFORMATION**

Polish **VERY GOOD**  
Symmetry **VERY GOOD**  
Fluorescence **SLIGHT**  
Inscription(s) **IGI LG786644431**  
Comments: This Laboratory Grown Diamond was created by Chemical Vapor Deposition (CVD) growth process.  
Indications of post-growth treatment.



April 20, 2026  
IGI Report No **LG786644431**  
**OCTAGONAL STEP CUT**  
**2.00 CARATS**  
Carat Weight **FANCY VIVID PINK**  
Color Grade **VS 2**  
Depth **63.8%**  
Table **13.5%**  
Girdle **Medium**  
Culet **Pointed**  
Polish **VERY GOOD**  
Symmetry **VERY GOOD**  
Fluorescence **SLIGHT**  
Inscription(s) **IGI LG786644431**  
Comments: This Laboratory Grown Diamond was created by Chemical Vapor Deposition (CVD) growth process.  
Indications of post-growth treatment.