



ELECTRONIC COPY

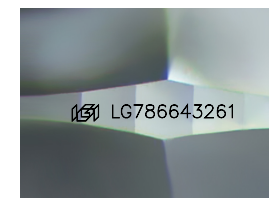
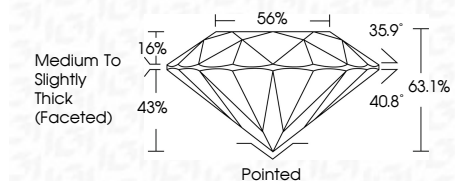
LG786643261 Report verification at igi.org



April 13, 2026 IGI Report Number LG786643261 Description LABORATORY GROWN DIAMOND Shape and Cutting Style ROUND BRILLIANT Measurements 6.53 - 6.58 X 4.13 MM

GRADING RESULTS

Carat Weight 1.10 CARAT Color Grade E Clarity Grade VVS 2 Cut Grade EXCELLENT



Sample Image Used

ADDITIONAL GRADING INFORMATION

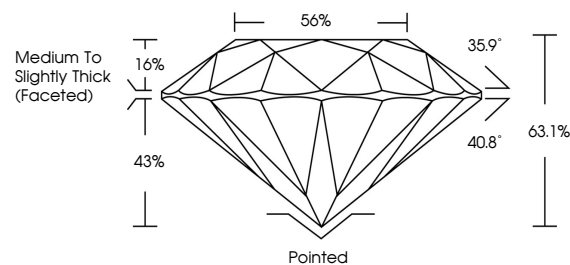
Polish VERY GOOD Symmetry EXCELLENT Fluorescence NONE Inscription(s) IGI LG786643261 Comments: This Laboratory Grown Diamond was created by Chemical Vapor Deposition (CVD) growth process. Type IIa



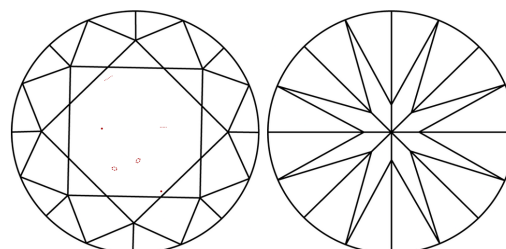
April 13, 2026 IGI Report No LG786643261 ROUND BRILLIANT 6.53 - 6.58 X 4.13 MM 1.10 CARAT E VVS 2 EXCELLENT 63.1% 56% Medium To Slightly Thick (Faceted) Pointed VERY GOOD EXCELLENT NONE IGI LG786643261

Comments: This Laboratory Grown Diamond was created by Chemical Vapor Deposition (CVD) growth process. Type IIa

PROPORTIONS



CLARITY CHARACTERISTICS



KEY TO SYMBOLS

Red symbols indicate internal characteristics. Green symbols indicate external characteristics.

COLOR

D E F G H I J Faint Very Light Light

CLARITY

FL IF VVS 1-2 VS 1-2 SI 1-2 I 1-3 Flawless Internally Flawless Very Very Slightly Included Very Slightly Included Slightly Included Included

