



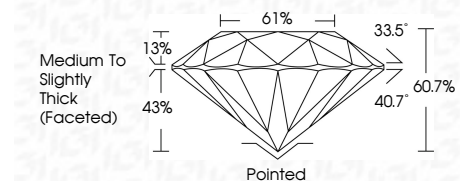
ELECTRONIC COPY

LG786642468 Report verification at igi.org



April 9, 2026 IGI Report Number LG786642468 Description LABORATORY GROWN DIAMOND Shape and Cutting Style ROUND BRILLIANT Measurements 6.83 - 6.88 X 4.16 MM

GRADING RESULTS Carat Weight 1.22 CARAT Color Grade D Clarity Grade VS 1 Cut Grade IDEAL

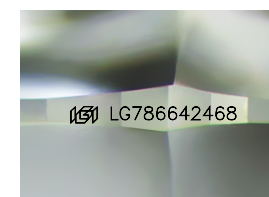


ADDITIONAL GRADING INFORMATION Polish EXCELLENT Symmetry EXCELLENT Fluorescence NONE Inscription(s) LG786642468 Comments: As Grown - No indication of post-growth treatment. This Laboratory Grown Diamond was created by High Pressure High Temperature (HPHT) growth process. Type II



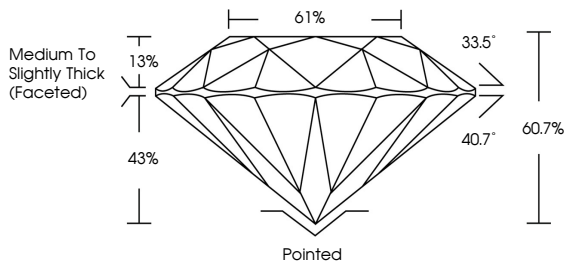
April 9, 2026 IGI Report No LG786642468 ROUND BRILLIANT 6.83 - 6.88 X 4.16 MM 1.22 CARAT D VS 1 IDEAL 60.7% 61% Medium To Slightly Thick (Faceted) Pointed EXCELLENT EXCELLENT NONE LG786642468

Comments: As Grown - No indication of post-growth treatment. This Laboratory Grown Diamond was created by High Pressure High Temperature (HPHT) growth process. Type II

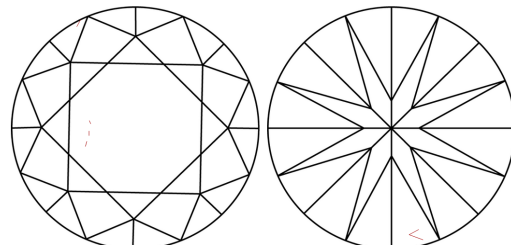


Sample Image Used

PROPORTIONS



CLARITY CHARACTERISTICS



KEY TO SYMBOLS Red symbols indicate internal characteristics. Green symbols indicate external characteristics.

COLOR

Color scale table with categories D, E, F, G, H, I, J, Faint, Very Light, Light

CLARITY

Clarity scale table with categories FL, IF, VS 1-2, VS 1-2, SI 1-2, I 1-3, Flawless, Internally Flawless, Very Very Slightly Included, Very Slightly Included, Slightly Included, Included

