



ELECTRONIC COPY

LG786642313
Report verification at igi.org



May 19, 2026
IGI Report Number **LG786642313**
Description **LABORATORY GROWN DIAMOND**
Shape and Cutting Style **ROUND BRILLIANT**
Measurements **9.36 - 9.41 X 5.76 MM**
GRADING RESULTS
Carat Weight **3.08 CARATS**
Color Grade **LIGHT BROWN**
Clarity Grade **VVS 2**
Cut Grade **IDEAL**

May 19, 2026
IGI Report Number **LG786642313**
Description **LABORATORY GROWN DIAMOND**
Shape and Cutting Style **ROUND BRILLIANT**
Measurements **9.36 - 9.41 X 5.76 MM**

GRADING RESULTS

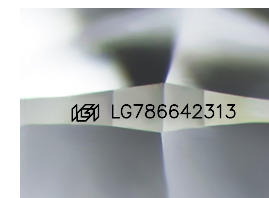
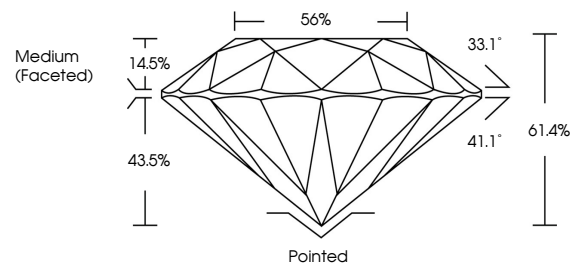
Carat Weight **3.08 CARATS**
Color Grade **LIGHT BROWN**
Clarity Grade **VVS 2**
Cut Grade **IDEAL**

ADDITIONAL GRADING INFORMATION

Polish **EXCELLENT**
Symmetry **EXCELLENT**
Fluorescence **VERY SLIGHT**
Inscription(s) **LG786642313**

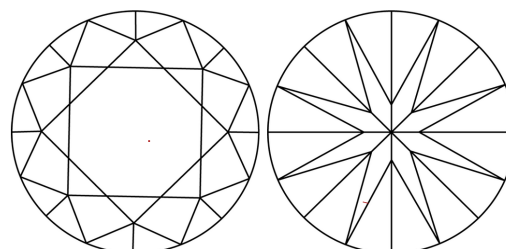
Comments: This Laboratory Grown Diamond was created by Chemical Vapor Deposition (CVD) growth process.
Type IIa

PROPORTIONS



Sample Image Used

CLARITY CHARACTERISTICS



KEY TO SYMBOLS

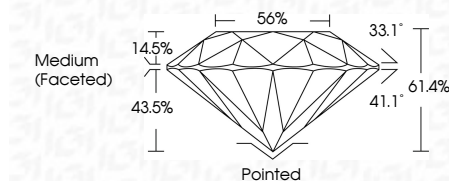
Red symbols indicate internal characteristics.
Green symbols indicate external characteristics.

COLOR

D E F G H I J Faint Very Light Light

CLARITY

FL	IF	VVS ¹⁻²	VS ¹⁻²	SI ¹⁻²	I ¹⁻³
Flawless	Internally Flawless	Very Very Slightly Included	Very Slightly Included	Slightly Included	Included



ADDITIONAL GRADING INFORMATION

Polish **EXCELLENT**
Symmetry **EXCELLENT**
Fluorescence **VERY SLIGHT**
Inscription(s) **LG786642313**
Comments: This Laboratory Grown Diamond was created by Chemical Vapor Deposition (CVD) growth process.
Type IIa



May 19, 2026
IGI Report No LG786642313
ROUND BRILLIANT

3.08 CARATS
Carat Weight
Color Grade
Clarity Grade
Depth
Table
Girdle
Medium (Faceted)

LIGHT BROWN
VVS 2
IDEAL
61.4%
56%

Pointed
EXCELLENT
EXCELLENT
VERY SLIGHT
Inscriptions(s)
IGI LG786642313

Comments: This Laboratory Grown Diamond was created by Chemical Vapor Deposition (CVD) growth process.
Type IIa

