



ELECTRONIC COPY

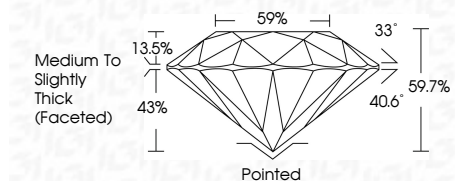
LG786641266 Report verification at igi.org



April 13, 2026 IGI Report Number LG786641266 Description LABORATORY GROWN DIAMOND Shape and Cutting Style ROUND BRILLIANT Measurements 8.63 - 8.68 X 5.17 MM

GRADING RESULTS

Carat Weight 2.37 CARATS Color Grade F Clarity Grade VVS 1 Cut Grade IDEAL



ADDITIONAL GRADING INFORMATION

Polish EXCELLENT Symmetry EXCELLENT Fluorescence NONE Inscription(s) LG786641266 Comments: As Grown - No indication of post-growth treatment. This Laboratory Grown Diamond was created by High Pressure High Temperature (HPHT) growth process. Type II



April 13, 2026 IGI Report No LG786641266 ROUND BRILLIANT 8.63 - 8.68 X 5.17 MM 2.37 CARATS F VVS 1 IDEAL 59.7% 59% Medium To Slightly Thick (Faceted) Pointed EXCELLENT EXCELLENT NONE LG786641266

April 13, 2026 IGI Report Number LG786641266 Description LABORATORY GROWN DIAMOND Shape and Cutting Style ROUND BRILLIANT Measurements 8.63 - 8.68 X 5.17 MM

GRADING RESULTS

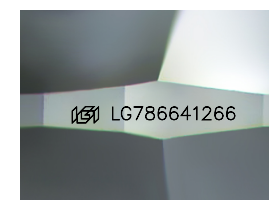
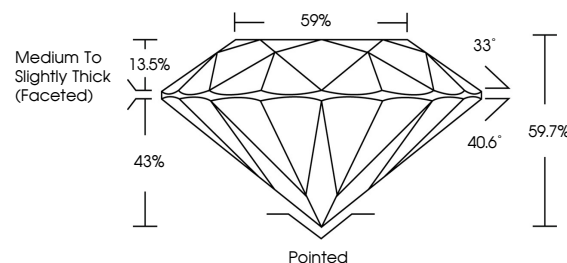
Carat Weight 2.37 CARATS Color Grade F Clarity Grade VVS 1 Cut Grade IDEAL

ADDITIONAL GRADING INFORMATION

Polish EXCELLENT Symmetry EXCELLENT Fluorescence NONE Inscription(s) LG786641266

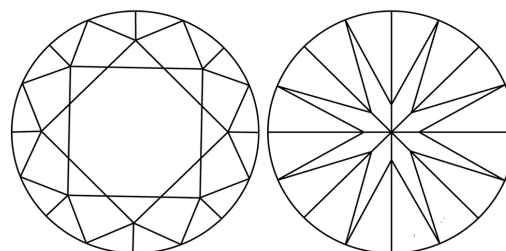
Comments: As Grown - No indication of post-growth treatment. This Laboratory Grown Diamond was created by High Pressure High Temperature (HPHT) growth process. Type II

PROPORTIONS



Sample Image Used

CLARITY CHARACTERISTICS



KEY TO SYMBOLS

Red symbols indicate internal characteristics. Green symbols indicate external characteristics.

COLOR

D E F G H I J Faint Very Light Light

CLARITY

FL IF VVS 1-2 VS 1-2 SI 1-2 I 1-3 Flawless Internally Flawless Very Very Slightly Included Very Slightly Included Slightly Included Included

