



ELECTRONIC COPY

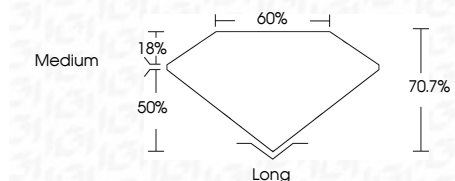
LG786634005
Report verification at igi.org



April 17, 2026
IGI Report Number **LG786634005**
Description **LABORATORY GROWN DIAMOND**
Shape and Cutting Style **TRAPEZE STEP CUT**
Measurements **7.97 X 5.18 X 3.66 MM**

GRADING RESULTS

Carat Weight **1.09 CARAT**
Color Grade **D**
Clarity Grade **VVS 1**



ADDITIONAL GRADING INFORMATION

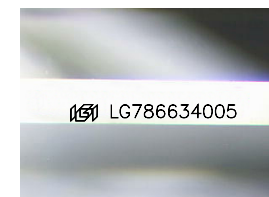
Polish **EXCELLENT**
Symmetry **EXCELLENT**
Fluorescence **NONE**
Inscription(s) **IGI LG786634005**
Comments: As Grown - No indication of post-growth treatment.
This Laboratory Grown Diamond was created by High Pressure High Temperature (HPHT) growth process.
Type II



IGI

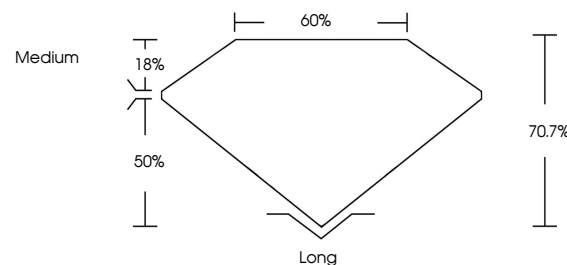
April 17, 2026
IGI Report No LG786634005
TRAPEZE STEP CUT
1.09 CARAT
D
7.97 X 5.18 X 3.66 MM
Color Grade
VVS 1
Depth 70.7%
Table 50%
Girdle
Medium
Long
Culet
Polish EXCELLENT
Symmetry EXCELLENT
Fluorescence NONE
Inscription(s) IGI LG786634005

Comments: As Grown - No indication of post-growth treatment.
This Laboratory Grown Diamond was created by High Pressure High Temperature (HPHT) growth process.
Type II

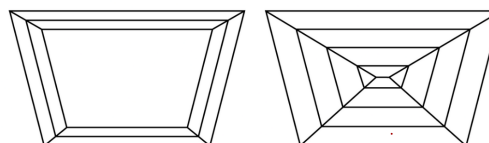


Sample Image Used

PROPORTIONS



CLARITY CHARACTERISTICS



KEY TO SYMBOLS

Red symbols indicate internal characteristics.
Green symbols indicate external characteristics.

COLOR

D E F G H I J Faint Very Light Light

CLARITY

FL	IF	VVS ¹⁻²	VS ¹⁻²	SI ¹⁻²	I ¹⁻³
Flawless	Internally Flawless	Very Very Slightly Included	Very Slightly Included	Slightly Included	Included

