



ELECTRONIC COPY

LG786633859 Report verification at igi.org



April 11, 2026 IGI Report Number LG786633859 Description LABORATORY GROWN DIAMOND Shape and Cutting Style CUSHION MODIFIED BRILLIANT Measurements 7.66 X 6.88 X 4.52 MM GRADING RESULTS Carat Weight 1.81 CARAT Color Grade E Clarity Grade VVS 2

LABORATORY GROWN DIAMOND REPORT

April 11, 2026 IGI Report Number LG786633859 Description LABORATORY GROWN DIAMOND Shape and Cutting Style CUSHION MODIFIED BRILLIANT Measurements 7.66 X 6.88 X 4.52 MM

GRADING RESULTS

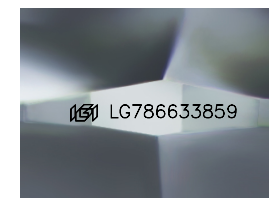
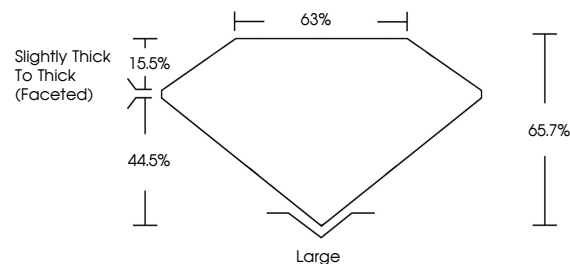
Carat Weight 1.81 CARAT Color Grade E Clarity Grade VVS 2

ADDITIONAL GRADING INFORMATION

Polish EXCELLENT Symmetry EXCELLENT Fluorescence NONE Inscription(s) IGI LG786633859

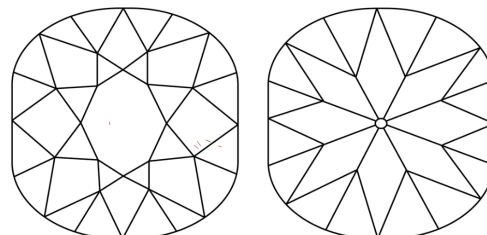
Comments: As Grown - No indication of post-growth treatment. This Laboratory Grown Diamond was created by High Pressure High Temperature (HPHT) growth process. Type II

PROPORTIONS



Sample Image Used

CLARITY CHARACTERISTICS



KEY TO SYMBOLS

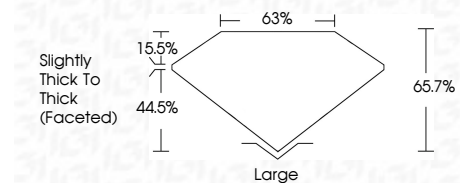
Red symbols indicate internal characteristics. Green symbols indicate external characteristics.

COLOR

D E F G H I J Faint Very Light Light

CLARITY

FL IF VVS 1-2 VS 1-2 SI 1-2 I 1-3 Flawless Internally Flawless Very Very Slightly Included Very Slightly Included Slightly Included Included



ADDITIONAL GRADING INFORMATION

Polish EXCELLENT Symmetry EXCELLENT Fluorescence NONE Inscription(s) IGI LG786633859 Comments: As Grown - No indication of post-growth treatment. This Laboratory Grown Diamond was created by High Pressure High Temperature (HPHT) growth process. Type II



IGI



April 11, 2026 IGI Report No LG786633859 CUSHION MODIFIED BRILLIANT 7.66 X 6.88 X 4.52 MM 1.81 CARAT E VVS 2 65.7% 63% Slightly Thick To Thick (Faceted) Large EXCELLENT EXCELLENT NONE NONE IGI LG786633859 Comments: As Grown - No indication of post-growth treatment. This Laboratory Grown Diamond was created by High Pressure High Temperature (HPHT) growth process. Type II