



ELECTRONIC COPY

LG786633461
Report verification at igi.org



April 2, 2026

IGI Report Number **LG786633461**

Description **LABORATORY GROWN DIAMOND**

Shape and Cutting Style **ROUND BRILLIANT**

Measurements **6.45 - 6.48 X 4.04 MM**

GRADING RESULTS

Carat Weight **1.03 CARAT**

Color Grade **H**

Clarity Grade **VVS 2**

Cut Grade **IDEAL**

April 2, 2026
IGI Report Number **LG786633461**
Description **LABORATORY GROWN DIAMOND**
Shape and Cutting Style **ROUND BRILLIANT**
Measurements **6.45 - 6.48 X 4.04 MM**

GRADING RESULTS

Carat Weight **1.03 CARAT**

Color Grade **H**

Clarity Grade **VVS 2**

Cut Grade **IDEAL**

ADDITIONAL GRADING INFORMATION

Polish **EXCELLENT**

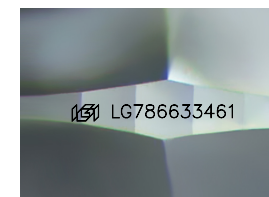
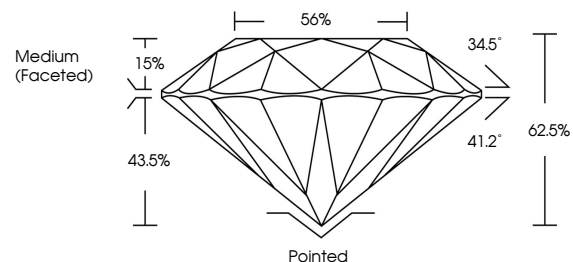
Symmetry **EXCELLENT**

Fluorescence **NONE**

Inscription(s) **LG786633461**

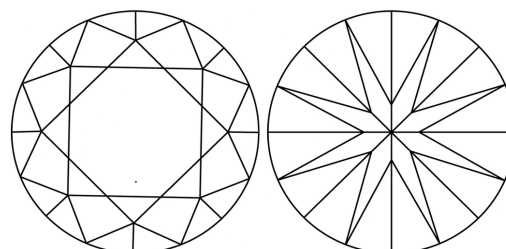
Comments: This Laboratory Grown Diamond was created by Chemical Vapor Deposition (CVD) growth process.
Type IIa

PROPORTIONS



Sample Image Used

CLARITY CHARACTERISTICS



KEY TO SYMBOLS

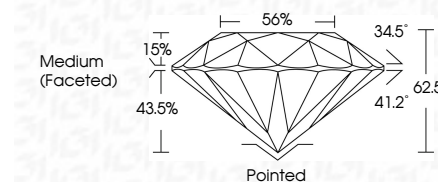
Red symbols indicate internal characteristics.
Green symbols indicate external characteristics.

COLOR

D E F G H I J Faint Very Light Light

CLARITY

FL	IF	VVS ¹⁻²	VS ¹⁻²	SI ¹⁻²	I ¹⁻³
Flawless	Internally Flawless	Very Very Slightly Included	Very Slightly Included	Slightly Included	Included



ADDITIONAL GRADING INFORMATION

Polish **EXCELLENT**

Symmetry **EXCELLENT**

Fluorescence **NONE**

Inscription(s) **LG786633461**

Comments: This Laboratory Grown Diamond was created by Chemical Vapor Deposition (CVD) growth process.
Type IIa



IGI



April 2, 2026	1.03 CARAT	H	Pointed
IGI Report No LG786633461	EXCELLENT	VVS 2	EXCELLENT
ROUND BRILLIANT	6.45 - 6.48 X 4.04 MM	IDEAL	EXCELLENT
Carat Weight	Color Grade	Depth	Medium (Faceted)
Color Grade	Clarity Grade	Table	66%
Clarity Grade	Cut Grade	Girdle	
Polish	Symmetry	Fluorescence	None
Symmetry	Inscriptions(s)		IGI LG786633461
Fluorescence			
Inscriptions(s)			

Comments: This Laboratory Grown Diamond was created by Chemical Vapor Deposition (CVD) growth process.
Type IIa