



**ELECTRONIC COPY**

LG786633435  
Report verification at igi.org



April 2, 2026

IGI Report Number **LG786633435**

Description **LABORATORY GROWN DIAMOND**

Shape and Cutting Style **ROUND BRILLIANT**

Measurements **8.29 - 8.35 X 4.96 MM**

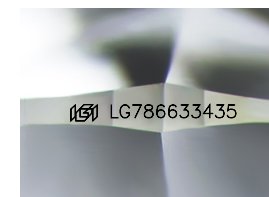
**GRADING RESULTS**

Carat Weight **2.07 CARATS**

Color Grade **G**

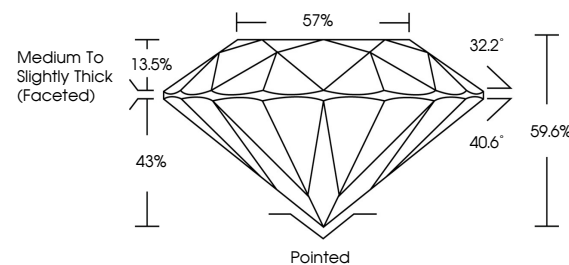
Clarity Grade **VVS 2**

Cut Grade **EXCELLENT**

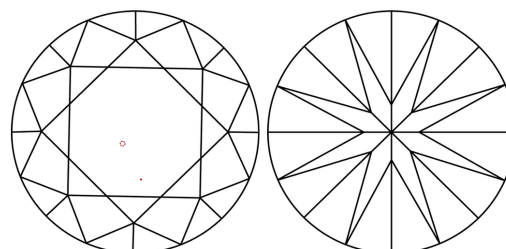


Sample Image Used

**PROPORTIONS**



**CLARITY CHARACTERISTICS**



**KEY TO SYMBOLS**

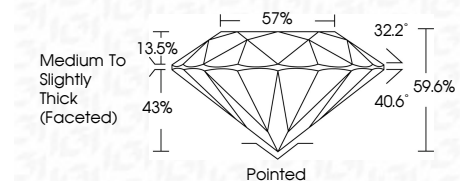
Red symbols indicate internal characteristics.  
Green symbols indicate external characteristics.

**COLOR**

D E F G H I J Faint Very Light Light

**CLARITY**

FL	IF	VVS <sup>1-2</sup>	VS <sup>1-2</sup>	SI <sup>1-2</sup>	I <sup>1-3</sup>
Flawless	Internally Flawless	Very Very Slightly Included	Very Slightly Included	Slightly Included	Included



**ADDITIONAL GRADING INFORMATION**

Polish **EXCELLENT**

Symmetry **EXCELLENT**

Fluorescence **NONE**

Inscription(s) **IGI LG786633435**

Comments: This Laboratory Grown Diamond was created by Chemical Vapor Deposition (CVD) growth process. Type IIa



April 2, 2026	IGI Report No LG786633435	2.07 CARATS	G	VVS 2	EXCELLENT	57%	32.2°	40.6°	13.5%	43%	59.6%	Pointed	EXCELLENT	EXCELLENT	NONE	IGI LG786633435
ROUND BRILLIANT	8.29 - 8.35 X 4.96 MM	Carat Weight	Color Grade	Clarity Grade	Cut Grade	Depth	Table	Girdle	Medium To Slightly Thick (Faceted)				Polish	Symmetry	Fluorescence	Inscription(s)

Comments: This Laboratory Grown Diamond was created by Chemical Vapor Deposition (CVD) growth process. Type IIa