



**ELECTRONIC COPY**

LG786633393  
Report verification at igi.org



April 2, 2026  
IGI Report Number **LG786633393**  
Description **LABORATORY GROWN DIAMOND**  
Shape and Cutting Style **ROUND BRILLIANT**  
Measurements **8.38 - 8.43 X 4.97 MM**  
**GRADING RESULTS**  
Carat Weight **2.21 CARATS**  
Color Grade **LIGHT PINKISH BROWN**  
Clarity Grade **VS 2**  
Cut Grade **VERY GOOD**

April 2, 2026  
IGI Report Number **LG786633393**  
Description **LABORATORY GROWN DIAMOND**  
Shape and Cutting Style **ROUND BRILLIANT**  
Measurements **8.38 - 8.43 X 4.97 MM**

**GRADING RESULTS**

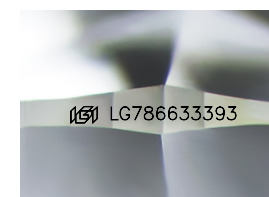
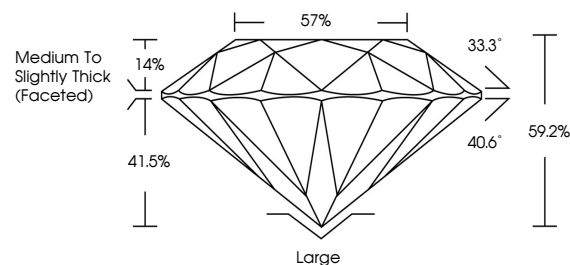
Carat Weight **2.21 CARATS**  
Color Grade **LIGHT PINKISH BROWN**  
Clarity Grade **VS 2**  
Cut Grade **VERY GOOD**

**ADDITIONAL GRADING INFORMATION**

Polish **EXCELLENT**  
Symmetry **EXCELLENT**  
Fluorescence **VERY SLIGHT**  
Inscription(s) **LG786633393**

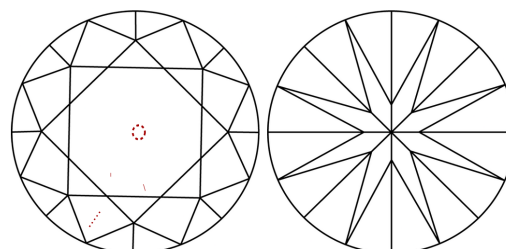
Comments: This Laboratory Grown Diamond was created by Chemical Vapor Deposition (CVD) growth process.  
Type IIa

**PROPORTIONS**



Sample Image Used

**CLARITY CHARACTERISTICS**



**KEY TO SYMBOLS**

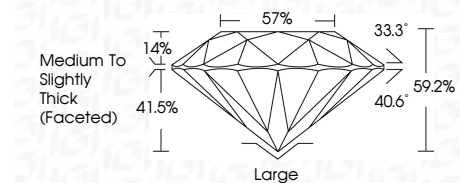
Red symbols indicate internal characteristics.  
Green symbols indicate external characteristics.

**COLOR**

D E F G H I J Faint Very Light Light

**CLARITY**

FL	IF	VS <sup>1-2</sup>	VS <sup>1-2</sup>	SI <sup>1-2</sup>	I <sup>1-3</sup>
Flawless	Internally Flawless	Very Very Slightly Included	Very Slightly Included	Slightly Included	Included



**ADDITIONAL GRADING INFORMATION**

Polish **EXCELLENT**  
Symmetry **EXCELLENT**  
Fluorescence **VERY SLIGHT**  
Inscription(s) **LG786633393**  
Comments: This Laboratory Grown Diamond was created by Chemical Vapor Deposition (CVD) growth process.  
Type IIa



April 2, 2026  
IGI Report No **LG786633393**  
**ROUND BRILLIANT**  
**8.38 - 8.43 X 4.97 MM**  
Carat Weight **2.21 CARATS**  
Color Grade **LIGHT PINKISH BROWN**  
Clarity Grade **VS 2**  
Cut Grade **VERY GOOD**  
Depth **59.2%**  
Table **57%**  
Girdle **Medium To Slightly Thick (Faceted)**  
Culet **Large**  
Polish **EXCELLENT**  
Symmetry **EXCELLENT**  
Fluorescence **VERY SLIGHT**  
Inscription(s) **IGI LG786633393**  
Comments: This Laboratory Grown Diamond was created by Chemical Vapor Deposition (CVD) growth process.  
Type IIa