



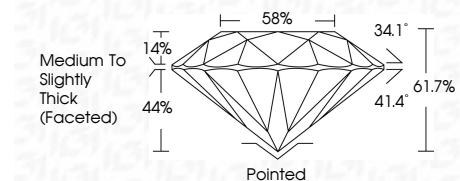
ELECTRONIC COPY

LG786633356 Report verification at igi.org



April 2, 2026 IGI Report Number LG786633356 Description LABORATORY GROWN DIAMOND Shape and Cutting Style ROUND BRILLIANT Measurements 8.95 - 9.01 X 5.52 MM

GRADING RESULTS Carat Weight 2.72 CARATS Color Grade G Clarity Grade VS 2 Cut Grade IDEAL



ADDITIONAL GRADING INFORMATION Polish EXCELLENT Symmetry EXCELLENT Fluorescence NONE Inscription(s) LG786633356 Comments: This Laboratory Grown Diamond was created by Chemical Vapor Deposition (CVD) growth process. Type IIa



April 2, 2026 IGI Report No LG786633356 ROUND BRILLIANT 8.95 - 9.01 X 5.52 MM 2.72 CARATS G VS 2 IDEAL 61.7% 58% Medium To Slightly Thick (Faceted) Pointed EXCELLENT EXCELLENT NONE NONE LG786633356

LABORATORY GROWN DIAMOND REPORT

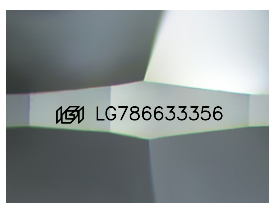
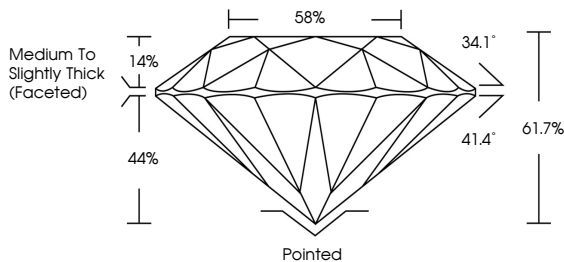
April 2, 2026 IGI Report Number LG786633356 Description LABORATORY GROWN DIAMOND Shape and Cutting Style ROUND BRILLIANT Measurements 8.95 - 9.01 X 5.52 MM

GRADING RESULTS Carat Weight 2.72 CARATS Color Grade G Clarity Grade VS 2 Cut Grade IDEAL

ADDITIONAL GRADING INFORMATION Polish EXCELLENT Symmetry EXCELLENT Fluorescence NONE Inscription(s) LG786633356

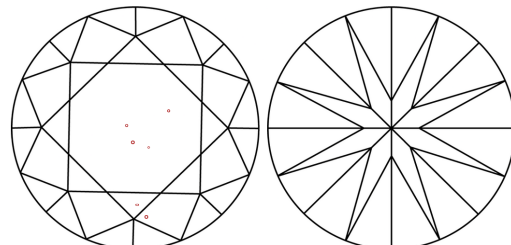
Comments: This Laboratory Grown Diamond was created by Chemical Vapor Deposition (CVD) growth process. Type IIa

PROPORTIONS



Sample Image Used

CLARITY CHARACTERISTICS



KEY TO SYMBOLS Red symbols indicate internal characteristics. Green symbols indicate external characteristics.

Color scale table with categories D, E, F, G, H, I, J, Faint, Very Light, Light

Clarity scale table with categories FL, IF, VS 1-2, VS 1-2, SI 1-2, I 1-3, Flawless, Internally Flawless, Very Very Slightly Included, Very Slightly Included, Slightly Included, Included

