



**ELECTRONIC COPY**

LG786633328  
Report verification at igi.org



April 2, 2026

IGI Report Number **LG786633328**

Description **LABORATORY GROWN DIAMOND**

Shape and Cutting Style **ROUND BRILLIANT**

Measurements **8.61 - 8.64 X 5.28 MM**

**GRADING RESULTS**

Carat Weight **2.42 CARATS**

Color Grade **H**

Clarity Grade **VVS 2**

Cut Grade **IDEAL**

April 2, 2026

IGI Report Number **LG786633328**

Description **LABORATORY GROWN DIAMOND**

Shape and Cutting Style **ROUND BRILLIANT**

Measurements **8.61 - 8.64 X 5.28 MM**

**GRADING RESULTS**

Carat Weight **2.42 CARATS**

Color Grade **H**

Clarity Grade **VVS 2**

Cut Grade **IDEAL**

**ADDITIONAL GRADING INFORMATION**

Polish **EXCELLENT**

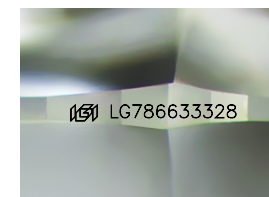
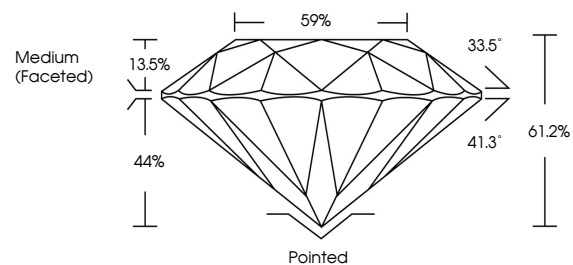
Symmetry **EXCELLENT**

Fluorescence **NONE**

Inscription(s) **LG786633328**

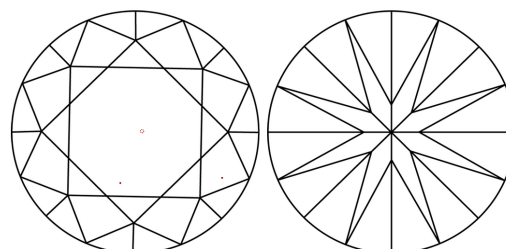
Comments: This Laboratory Grown Diamond was created by Chemical Vapor Deposition (CVD) growth process.  
Type IIa

**PROPORTIONS**



Sample Image Used

**CLARITY CHARACTERISTICS**



**KEY TO SYMBOLS**

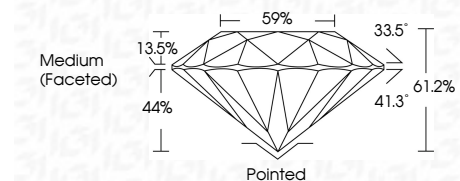
Red symbols indicate internal characteristics.  
Green symbols indicate external characteristics.

**COLOR**

D E F G H I J Faint Very Light Light

**CLARITY**

FL	IF	VVS <sup>1-2</sup>	VS <sup>1-2</sup>	SI <sup>1-2</sup>	I <sup>1-3</sup>
Flawless	Internally Flawless	Very Very Slightly Included	Very Slightly Included	Slightly Included	Included



**ADDITIONAL GRADING INFORMATION**

Polish **EXCELLENT**

Symmetry **EXCELLENT**

Fluorescence **NONE**

Inscription(s) **LG786633328**

Comments: This Laboratory Grown Diamond was created by Chemical Vapor Deposition (CVD) growth process.  
Type IIa



**IGI**



April 2, 2026  
IGI Report No LG786633328  
**ROUND BRILLIANT**

**8.61 - 8.64 X 5.28 MM**

Carat Weight **2.42 CARATS**

Color Grade **H**

Clarity Grade **VVS 2**

Cut Grade **IDEAL**

Depth **61.2%**

Table **59%**

Girdle **Medium (Faceted)**

Culet **Pointed**

Polish **EXCELLENT**

Symmetry **EXCELLENT**

Fluorescence **NONE**

Inscription(s) **LG786633328**

Comments: This Laboratory Grown Diamond was created by Chemical Vapor Deposition (CVD) growth process.  
Type IIa