



ELECTRONIC COPY

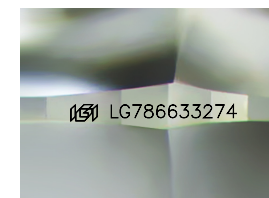
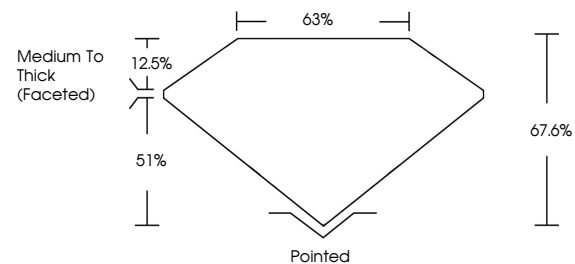
LG786633274
Report verification at igi.org



April 2, 2026
IGI Report Number **LG786633274**
Description **LABORATORY GROWN DIAMOND**
Shape and Cutting Style **CUSHION MODIFIED BRILLIANT**
Measurements **9.76 X 7.60 X 5.14 MM**
GRADING RESULTS
Carat Weight **3.06 CARATS**
Color Grade **D**
Clarity Grade **VS 1**

April 2, 2026
IGI Report Number **LG786633274**
Description **LABORATORY GROWN DIAMOND**
Shape and Cutting Style **CUSHION MODIFIED BRILLIANT**
Measurements **9.76 X 7.60 X 5.14 MM**

PROPORTIONS

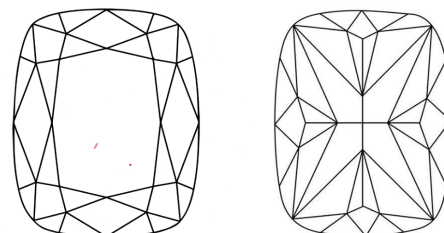


Sample Image Used

GRADING RESULTS

Carat Weight **3.06 CARATS**
Color Grade **D**
Clarity Grade **VS 1**

CLARITY CHARACTERISTICS



KEY TO SYMBOLS

Red symbols indicate internal characteristics.
Green symbols indicate external characteristics.

ADDITIONAL GRADING INFORMATION

Polish **EXCELLENT**
Symmetry **EXCELLENT**
Fluorescence **NONE**
Inscription(s) **IGI LG786633274**

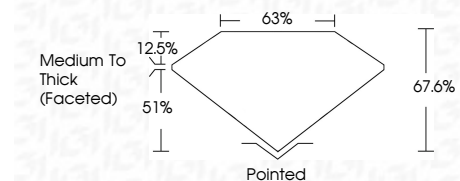
Comments: LGD GSI 73341530118
This Laboratory Grown Diamond was created by Chemical Vapor Deposition (CVD) growth process. Type IIa

COLOR

D E F G H I J Faint Very Light Light

CLARITY

FL	IF	VS ¹⁻²	VS ¹⁻²	SI ¹⁻²	I ¹⁻³
Flawless	Internally Flawless	Very Very Slightly Included	Very Slightly Included	Slightly Included	Included



ADDITIONAL GRADING INFORMATION

Polish **EXCELLENT**
Symmetry **EXCELLENT**
Fluorescence **NONE**
Inscription(s) **IGI LG786633274**
Comments: LGD GSI 73341530118
This Laboratory Grown Diamond was created by Chemical Vapor Deposition (CVD) growth process. Type IIa



April 2, 2026
IGI Report No LG786633274
CUSHION MODIFIED BRILLIANT
9.76 X 7.60 X 5.14 MM
3.06 CARATS
D
VS 1
67.6%
51%
Medium To Thick (Faceted)
Pointed
EXCELLENT
EXCELLENT
NONE
IGI LG786633274
Comments: LGD GSI 73341530118
This Laboratory Grown Diamond was created by Chemical Vapor Deposition (CVD) growth process. Type IIa