



ELECTRONIC COPY

LG786627113
Report verification at igi.org



April 16, 2026
IGI Report Number **LG786627113**
Description **LABORATORY GROWN DIAMOND**
Shape and Cutting Style **MODIFIED SQUARE EMERALD CUT**

Measurements **8.57 X 8.17 X 5.52 MM**

GRADING RESULTS
Carat Weight **3.58 CARATS**
Color Grade **FANCY VIVID GREEN**
Clarity Grade **VS 2**

April 16, 2026
IGI Report Number **LG786627113**
Description **LABORATORY GROWN DIAMOND**
Shape and Cutting Style **MODIFIED SQUARE EMERALD CUT**
Measurements **8.57 X 8.17 X 5.52 MM**

GRADING RESULTS

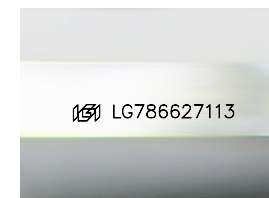
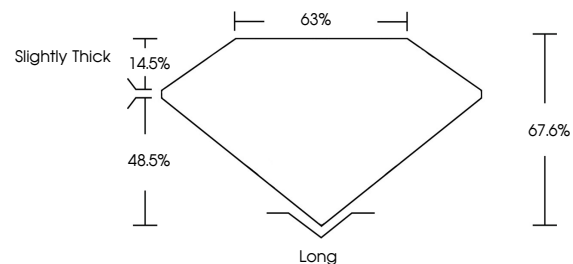
Carat Weight **3.58 CARATS**
Color Grade **FANCY VIVID GREEN**
Clarity Grade **VS 2**

ADDITIONAL GRADING INFORMATION

Polish **EXCELLENT**
Symmetry **EXCELLENT**
Fluorescence **NONE**
Inscription(s) **IGI LG786627113**

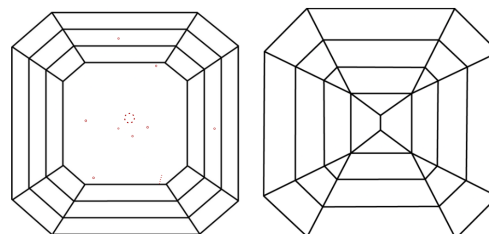
Comments: This Laboratory Grown Diamond was created by Chemical Vapor Deposition (CVD) growth process.
Indications of post-growth treatment.

PROPORTIONS



Sample Image Used

CLARITY CHARACTERISTICS



KEY TO SYMBOLS

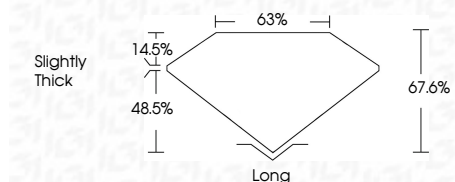
Red symbols indicate internal characteristics.
Green symbols indicate external characteristics.

COLOR

D E F G H I J Faint Very Light Light

CLARITY

FL	IF	VS ¹⁻²	VS ¹⁻²	SI ¹⁻²	I ¹⁻³
Flawless	Internally Flawless	Very Very Slightly Included	Very Slightly Included	Slightly Included	Included



ADDITIONAL GRADING INFORMATION

Polish **EXCELLENT**
Symmetry **EXCELLENT**
Fluorescence **NONE**
Inscription(s) **IGI LG786627113**
Comments: This Laboratory Grown Diamond was created by Chemical Vapor Deposition (CVD) growth process.
Indications of post-growth treatment.



April 16, 2026
IGI Report No **LG786627113**
MODIFIED SQUARE EMERALD CUT
3.58 CARATS
Carat Weight **FANCY VIVID GREEN**
Color Grade **VS 2**
Depth **67.6%**
Table **63%**
Girdle **Slightly Thick**
Culet **Long**
Polish **EXCELLENT**
Symmetry **EXCELLENT**
Fluorescence **NONE**
Inscription(s) **IGI LG786627113**
Comments: This Laboratory Grown Diamond was created by Chemical Vapor Deposition (CVD) growth process.
Indications of post-growth treatment.