



ELECTRONIC COPY

LG786625832
Report verification at igi.org



April 7, 2026
IGI Report Number **LG786625832**
Description **LABORATORY GROWN DIAMOND**
Shape and Cutting Style **PENTAGONAL MODIFIED BRILLIANT**
Measurements **6.71 X 7.12 X 3.89 MM**
GRADING RESULTS
Carat Weight **1.12 CARAT**
Color Grade **FANCY YELLOW**
Clarity Grade **VVS 2**

LABORATORY GROWN DIAMOND REPORT

April 7, 2026
IGI Report Number **LG786625832**
Description **LABORATORY GROWN DIAMOND**
Shape and Cutting Style **PENTAGONAL MODIFIED BRILLIANT**
Measurements **6.71 X 7.12 X 3.89 MM**

GRADING RESULTS

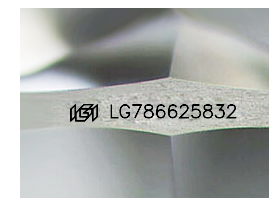
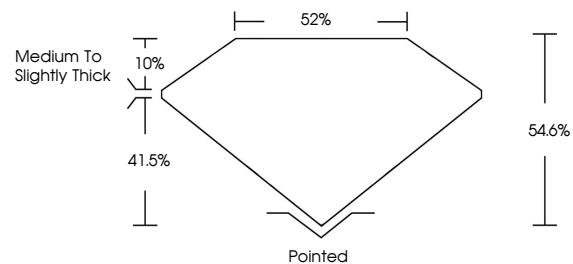
Carat Weight **1.12 CARAT**
Color Grade **FANCY YELLOW**
Clarity Grade **VVS 2**

ADDITIONAL GRADING INFORMATION

Polish **VERY GOOD**
Symmetry **EXCELLENT**
Fluorescence **NONE**
Inscription(s) **IGI LG786625832**

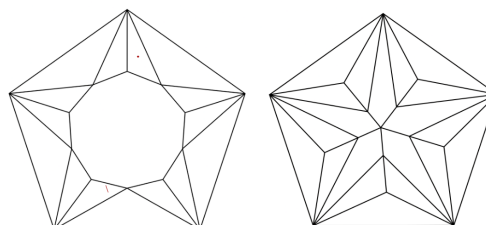
Comments: This Laboratory Grown Diamond was created by Chemical Vapor Deposition (CVD) growth process.

PROPORTIONS



Sample Image Used

CLARITY CHARACTERISTICS



KEY TO SYMBOLS

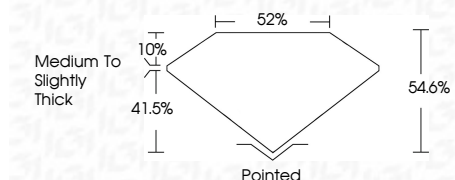
Red symbols indicate internal characteristics.
Green symbols indicate external characteristics.

COLOR

D E F G H I J Faint Very Light Light

CLARITY

FL	IF	VVS ¹⁻²	VS ¹⁻²	SI ¹⁻²	I ¹⁻³
Flawless	Internally Flawless	Very Very Slightly Included	Very Slightly Included	Slightly Included	Included



ADDITIONAL GRADING INFORMATION

Polish **VERY GOOD**
Symmetry **EXCELLENT**
Fluorescence **NONE**
Inscription(s) **IGI LG786625832**
Comments: This Laboratory Grown Diamond was created by Chemical Vapor Deposition (CVD) growth process.



IGI



April 7, 2026
IGI Report No **LG786625832**
PENTAGONAL MODIFIED BRILLIANT
6.71 X 7.12 X 3.89 MM
Carat Weight **1.12 CARAT**
Color Grade **FANCY YELLOW**
Clarity Grade **VVS 2**
Depth **54.6%**
Table **52%**
Girdle **Medium to Slightly Thick**
Culet **Pointed**
Polish **VERY GOOD**
Symmetry **EXCELLENT**
Fluorescence **NONE**
Inscription(s) **IGI LG786625832**

Comments: This Laboratory Grown Diamond was created by Chemical Vapor Deposition (CVD) growth process.