



ELECTRONIC COPY

LG786625831 Report verification at igi.org



April 7, 2026 IGI Report Number LG786625831 Description LABORATORY GROWN DIAMOND Shape and Cutting Style CUSHION MODIFIED BRILLIANT Measurements 8.48 X 6.25 X 4.16 MM GRADING RESULTS Carat Weight 2.01 CARATS Color Grade FANCY VIVID YELLOW Clarity Grade VVS 2

April 7, 2026 IGI Report Number LG786625831 Description LABORATORY GROWN DIAMOND Shape and Cutting Style CUSHION MODIFIED BRILLIANT Measurements 8.48 X 6.25 X 4.16 MM

GRADING RESULTS

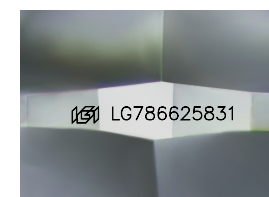
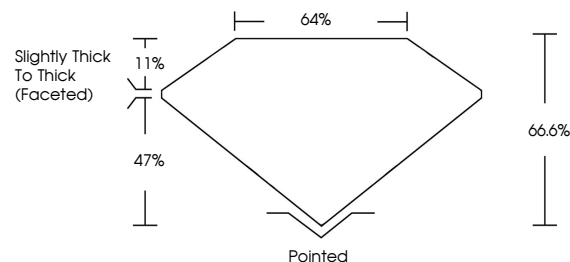
Carat Weight 2.01 CARATS Color Grade FANCY VIVID YELLOW Clarity Grade VVS 2

ADDITIONAL GRADING INFORMATION

Polish VERY GOOD Symmetry VERY GOOD Fluorescence NONE Inscription(s) IGI LG786625831

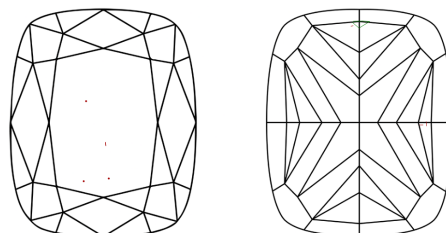
Comments: This Laboratory Grown Diamond was created by Chemical Vapor Deposition (CVD) growth process.

PROPORTIONS



Sample Image Used

CLARITY CHARACTERISTICS



KEY TO SYMBOLS

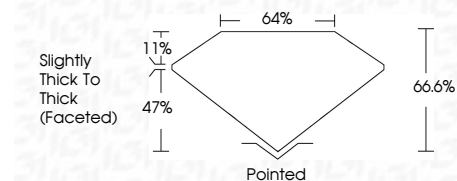
Red symbols indicate internal characteristics. Green symbols indicate external characteristics.

COLOR

D E F G H I J Faint Very Light Light

CLARITY

FL IF VVS 1-2 VS 1-2 SI 1-2 I 1-3 Flawless Internally Flawless Very Very Slightly Included Very Slightly Included Slightly Included Included



ADDITIONAL GRADING INFORMATION

Polish VERY GOOD Symmetry VERY GOOD Fluorescence NONE Inscription(s) IGI LG786625831 Comments: This Laboratory Grown Diamond was created by Chemical Vapor Deposition (CVD) growth process.



April 7, 2026 IGI Report No LG786625831 CUSHION MODIFIED BRILLIANT 8.48 X 6.25 X 4.16 MM 2.01 CARATS FANCY VIVID YELLOW VVS 2 66.6% 47% Slightly Thick To Thick (Faceted) Pointed VERY GOOD VERY GOOD NONE NONE IGI LG786625831 Comments: This Laboratory Grown Diamond was created by Chemical Vapor Deposition (CVD) growth process.