



ELECTRONIC COPY

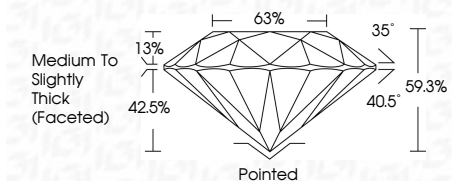
LG786625634
Report verification at igi.org



April 6, 2026
IGI Report Number **LG786625634**
Description **LABORATORY GROWN DIAMOND**
Shape and Cutting Style **ROUND BRILLIANT**
Measurements **6.63 - 6.65 X 3.94 MM**

GRADING RESULTS

Carat Weight **1.08 CARAT**
Color Grade **FANCY VIVID PINK**
Clarity Grade **VS 1**
Cut Grade **IDEAL**

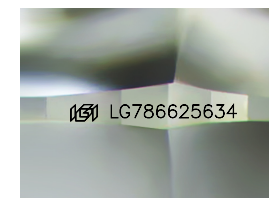


ADDITIONAL GRADING INFORMATION

Polish **VERY GOOD**
Symmetry **VERY GOOD**
Fluorescence **SLIGHT**
Inscription(s) **IGI LG786625634**
Comments: This Laboratory Grown Diamond was created by High Pressure High Temperature (HPHT) growth process. Indications of post-growth treatment.

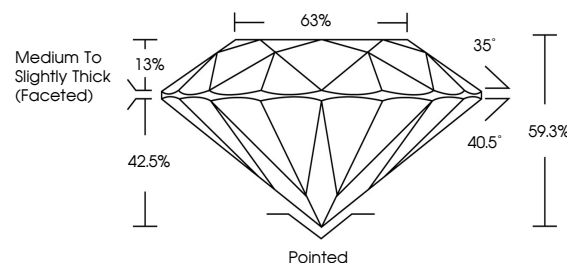


April 6, 2026
IGI Report No LG786625634
ROUND BRILLIANT
1.08 CARAT
FANCY VIVID PINK
VS 1
IDEAL
6.63 - 6.65 X 3.94 MM
68%
Medium To Slightly Thick (Faceted)
Pointed
VERY GOOD
VERY GOOD
SLIGHT
IGI LG786625634
Comments: This Laboratory Grown Diamond was created by High Pressure High Temperature (HPHT) growth process. Indications of post-growth treatment.

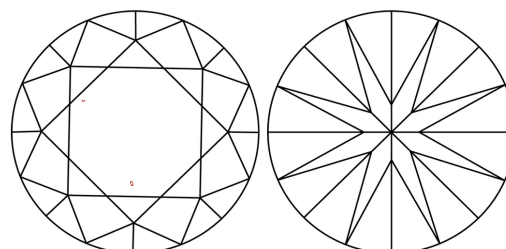


Sample Image Used

PROPORTIONS



CLARITY CHARACTERISTICS



KEY TO SYMBOLS

Red symbols indicate internal characteristics.
Green symbols indicate external characteristics.

COLOR

D E F G H I J Faint Very Light Light

CLARITY

FL	IF	VS ¹⁻²	VS ¹⁻²	SI ¹⁻²	I ¹⁻³
Flawless	Internally Flawless	Very Very Slightly Included	Very Slightly Included	Slightly Included	Included

