



**ELECTRONIC COPY**

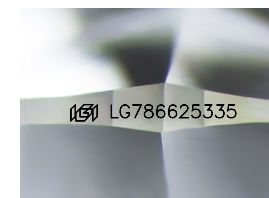
LG786625335  
Report verification at igi.org



April 9, 2026  
IGI Report Number **LG786625335**  
Description **LABORATORY GROWN DIAMOND**  
Shape and Cutting Style **ROUND BRILLIANT**  
Measurements **8.30 - 8.36 X 5.21 MM**

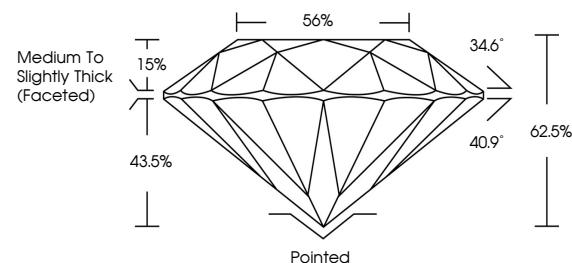
**GRADING RESULTS**

Carat Weight **2.22 CARATS**  
Color Grade **D**  
Clarity Grade **VVS 2**  
Cut Grade **IDEAL**

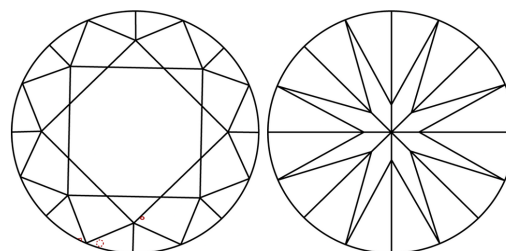


Sample Image Used

**PROPORTIONS**



**CLARITY CHARACTERISTICS**



**KEY TO SYMBOLS**

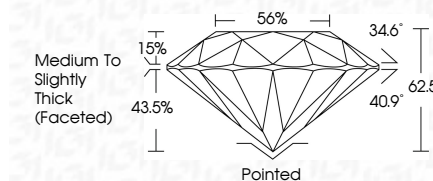
Red symbols indicate internal characteristics.  
Green symbols indicate external characteristics.

**COLOR**

D E F G H I J Faint Very Light Light

**CLARITY**

FL	IF	VVS <sup>1-2</sup>	VS <sup>1-2</sup>	SI <sup>1-2</sup>	I <sup>1-3</sup>
Flawless	Internally Flawless	Very Very Slightly Included	Very Slightly Included	Slightly Included	Included



**ADDITIONAL GRADING INFORMATION**

Polish **EXCELLENT**  
Symmetry **EXCELLENT**  
Fluorescence **NONE**  
Inscription(s) **IGI LG786625335**  
Comments: As Grown - No indication of post-growth treatment.  
This Laboratory Grown Diamond was created by High Pressure High Temperature (HPHT) growth process.  
Type II



**IGI**



April 9, 2026  
IGI Report No LG786625335  
**ROUND BRILLIANT**  
8.30 - 8.36 X 5.21 MM  
2.22 CARATS  
D  
VVS 2  
IDEAL  
62.5%  
56%  
Medium To Slightly Thick (Faceted)  
Pointed  
EXCELLENT  
EXCELLENT  
NONE  
IGI LG786625335

Cut: Polished  
Polish: EXCELLENT  
Symmetry: EXCELLENT  
Fluorescence: NONE  
Inscriptions(s): IGI LG786625335

Comments: As Grown - No indication of post-growth treatment.  
This Laboratory Grown Diamond was created by High Pressure High Temperature (HPHT) growth process.  
Type II