



ELECTRONIC COPY

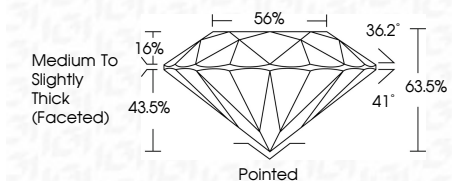
LG786625259 Report verification at igi.org



April 9, 2026 IGI Report Number LG786625259 Description LABORATORY GROWN DIAMOND Shape and Cutting Style ROUND BRILLIANT Measurements 6.41 - 6.45 X 4.09 MM

GRADING RESULTS

Carat Weight 1.06 CARAT Color Grade E Clarity Grade VS 1 Cut Grade EXCELLENT



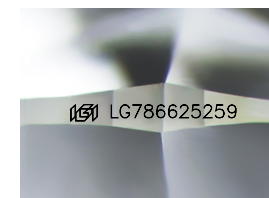
ADDITIONAL GRADING INFORMATION

Polish EXCELLENT Symmetry VERY GOOD Fluorescence NONE Inscription(s) (IGI) LG786625259 Comments: As Grown - No indication of post-growth treatment. This Laboratory Grown Diamond was created by High Pressure High Temperature (HPHT) growth process. Type II



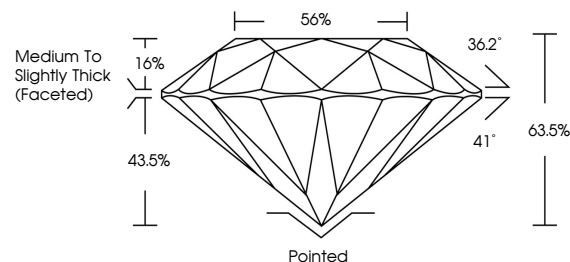
April 9, 2026 IGI Report No LG786625259 ROUND BRILLIANT 6.41 - 6.45 X 4.09 MM 1.06 CARAT E VS 1 EXCELLENT 63.5% 56% Medium To Slightly Thick (Faceted) Pointed EXCELLENT VERY GOOD NONE NONE (IGI) LG786625259

Comments: As Grown - No indication of post-growth treatment. This Laboratory Grown Diamond was created by High Pressure High Temperature (HPHT) growth process. Type II

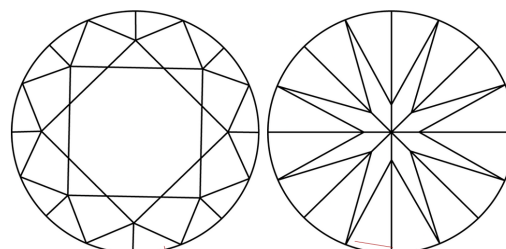


Sample Image Used

PROPORTIONS



CLARITY CHARACTERISTICS



KEY TO SYMBOLS

Red symbols indicate internal characteristics. Green symbols indicate external characteristics.

COLOR

D E F G H I J Faint Very Light Light

CLARITY

FL IF VS 1-2 VS 1-2 SI 1-2 I 1-3 Flawless Internally Flawless Very Very Slightly Included Very Slightly Included Slightly Included Included

