



ELECTRONIC COPY

LG786625164 Report verification at igi.org



April 9, 2026 IGI Report Number LG786625164 Description LABORATORY GROWN DIAMOND Shape and Cutting Style ROUND MIXED CUT Measurements 7.90 - 7.90 X 4.89 MM

GRADING RESULTS Carat Weight 2.02 CARATS Color Grade E Clarity Grade VVS 2

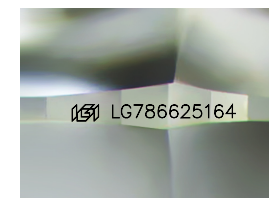
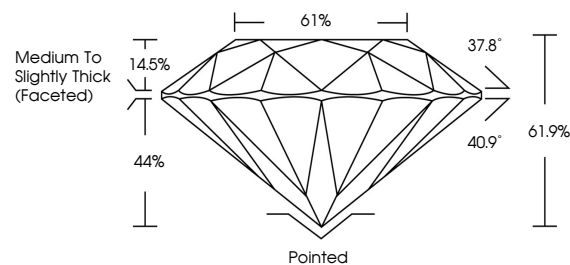
April 9, 2026 IGI Report Number LG786625164 Description LABORATORY GROWN DIAMOND Shape and Cutting Style ROUND MIXED CUT Measurements 7.90 - 7.90 X 4.89 MM

GRADING RESULTS Carat Weight 2.02 CARATS Color Grade E Clarity Grade VVS 2

ADDITIONAL GRADING INFORMATION Polish EXCELLENT Symmetry EXCELLENT Fluorescence NONE Inscription(s) IGI LG786625164

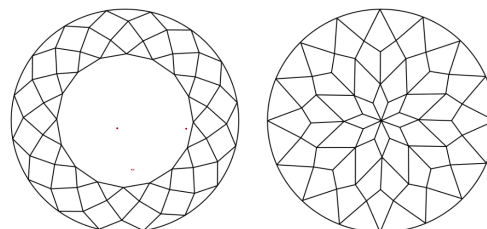
Comments: This Laboratory Grown Diamond was created by Chemical Vapor Deposition (CVD) growth process. Type IIa

PROPORTIONS



Sample Image Used

CLARITY CHARACTERISTICS



KEY TO SYMBOLS

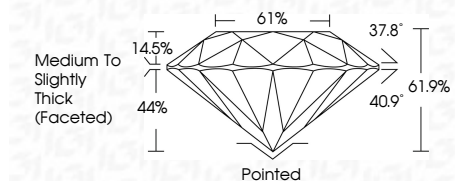
Red symbols indicate internal characteristics. Green symbols indicate external characteristics.

COLOR

D E F G H I J Faint Very Light Light

CLARITY

Table with columns: FL, IF, VS 1-2, VS 1-2, SI 1-2, I 1-3 and corresponding descriptions: Flawless, Internally Flawless, Very Very Slightly Included, Very Slightly Included, Slightly Included, Included



ADDITIONAL GRADING INFORMATION

Polish EXCELLENT Symmetry EXCELLENT Fluorescence NONE Inscription(s) IGI LG786625164 Comments: This Laboratory Grown Diamond was created by Chemical Vapor Deposition (CVD) growth process. Type IIa



April 9, 2026 IGI Report No LG786625164 ROUND MIXED CUT 2.02 CARATS E VS 2 61.9% 61% Medium to Slightly Thick (Faceted) Pointed EXCELLENT EXCELLENT NONE NONE IGI LG786625164 Comments: This Laboratory Grown Diamond was created by Chemical Vapor Deposition (CVD) growth process. Type IIa