



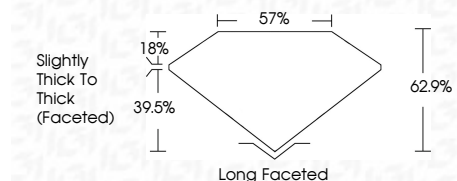
ELECTRONIC COPY

LG786624581
Report verification at igi.org



April 7, 2026
IGI Report Number **LG786624581**
Description **LABORATORY GROWN DIAMOND**
Shape and Cutting Style **ANTIQUÉ CUSHION CUT**
Measurements **9.33 X 5.63 X 3.54 MM**

GRADING RESULTS
Carat Weight **1.62 CARAT**
Color Grade **H**
Clarity Grade **VS 2**



ADDITIONAL GRADING INFORMATION
Polish **GOOD**
Symmetry **VERY GOOD**
Fluorescence **NONE**
Inscription(s) **(IGI) LG786624581**
Comments: This Laboratory Grown Diamond was created by Chemical Vapor Deposition (CVD) growth process. Type IIa



April 7, 2026
IGI Report No LG786624581
ANTIQUÉ CUSHION CUT
9.33 X 5.63 X 3.54 MM
Carat Weight 1.62 CARAT
Color Grade H
Clarity Grade VS 2
Depth 62.9%
Table 39.5%
Girdle Slightly Thick To Thick (Faceted)
Culet Long Faceted
Polish GOOD
Symmetry VERY GOOD
Fluorescence NONE
Inscription(s) (IGI) LG786624581
Comments: This Laboratory Grown Diamond was created by Chemical Vapor Deposition (CVD) growth process. Type IIa

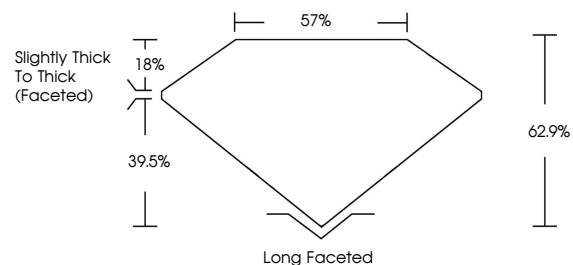
April 7, 2026
IGI Report Number **LG786624581**
Description **LABORATORY GROWN DIAMOND**
Shape and Cutting Style **ANTIQUÉ CUSHION CUT**
Measurements **9.33 X 5.63 X 3.54 MM**

GRADING RESULTS
Carat Weight **1.62 CARAT**
Color Grade **H**
Clarity Grade **VS 2**

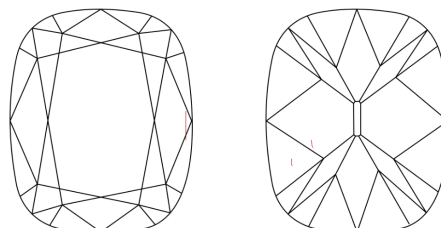
ADDITIONAL GRADING INFORMATION
Polish **GOOD**
Symmetry **VERY GOOD**
Fluorescence **NONE**
Inscription(s) **(IGI) LG786624581**

Comments: This Laboratory Grown Diamond was created by Chemical Vapor Deposition (CVD) growth process. Type IIa

PROPORTIONS

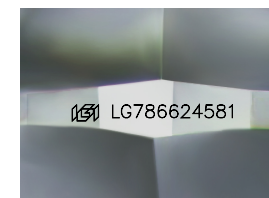


CLARITY CHARACTERISTICS



KEY TO SYMBOLS

Red symbols indicate internal characteristics.
Green symbols indicate external characteristics.



Sample Image Used

COLOR

D E F G H I J Faint Very Light Light

CLARITY

FL	IF	VS ¹⁻²	VS ¹⁻²	SI ¹⁻²	I ¹⁻³
Flawless	Internally Flawless	Very Very Slightly Included	Very Slightly Included	Slightly Included	Included

