



**ELECTRONIC COPY**

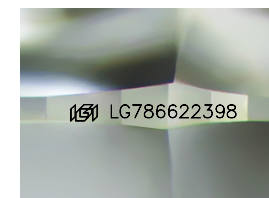
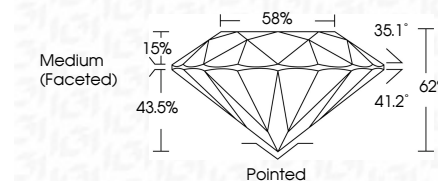
LG786622398  
Report verification at igi.org



March 26, 2026  
IGI Report Number **LG786622398**  
Description **LABORATORY GROWN DIAMOND**  
Shape and Cutting Style **ROUND BRILLIANT**  
Measurements **8.12 - 8.15 X 5.05 MM**

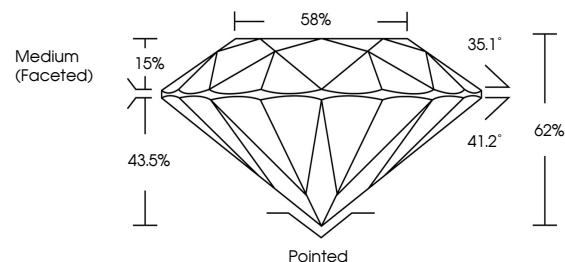
**GRADING RESULTS**

Carat Weight **2.04 CARATS**  
Color Grade **LIGHT ORANGY PINK**  
Clarity Grade **VS 1**  
Cut Grade **IDEAL**

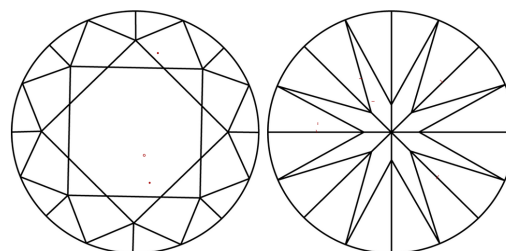


Sample Image Used

**PROPORTIONS**



**CLARITY CHARACTERISTICS**



**KEY TO SYMBOLS**

Red symbols indicate internal characteristics.  
Green symbols indicate external characteristics.

**COLOR**

D E F G H I J Faint Very Light Light

**CLARITY**

FL	IF	VS <sup>1-2</sup>	VS <sup>1-2</sup>	SI <sup>1-2</sup>	I <sup>1-3</sup>
Flawless	Internally Flawless	Very Very Slightly Included	Very Slightly Included	Slightly Included	Included

**ADDITIONAL GRADING INFORMATION**

Polish **EXCELLENT**  
Symmetry **EXCELLENT**  
Fluorescence **STRONG**  
Inscription(s) **IGI LG786622398**

Comments: This Laboratory Grown Diamond was created by Chemical Vapor Deposition (CVD) growth process. Indications of post-growth treatment.



March 26, 2026  
IGI Report No LG786622398  
ROUND BRILLIANT

2.04 CARATS  
LIGHT ORANGY PINK  
VS 1  
IDEAL  
62%  
58%  
Medium (Faceted)

Pointed  
EXCELLENT  
EXCELLENT  
STRONG  
IGI LG786622398

Comments: This Laboratory Grown Diamond was created by Chemical Vapor Deposition (CVD) growth process. Indications of post-growth treatment.