



March 31, 2026

**IGI Report Number LG786619786**  
**HEXAGONAL STEP CUT**  
**LABORATORY GROWN DIAMOND**  
**8.44 X 5.63 X 3.17 MM**

Carat Weight **0.93 CARAT**  
Color Grade **D**  
Clarity Grade **VVS 2**  
Polish **VERY GOOD**  
Symmetry **EXCELLENT**  
Fluorescence **NONE**  
Inscription(s) **IGI LG786619786**

Comments: This Laboratory Grown Diamond was created by Chemical Vapor Deposition (CVD) growth process. Type IIa

**LABORATORY GROWN DIAMOND REPORT**

March 31, 2026  
IGI Report Number **LG786619786**  
Description **LABORATORY GROWN DIAMOND**  
Shape and Cutting Style **HEXAGONAL STEP CUT**  
Measurements **8.44 X 5.63 X 3.17 MM**

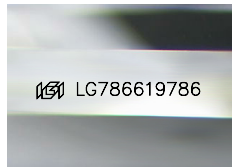
**GRADING RESULTS**

Carat Weight **0.93 CARAT**  
Color Grade **D**  
Clarity Grade **VVS 2**

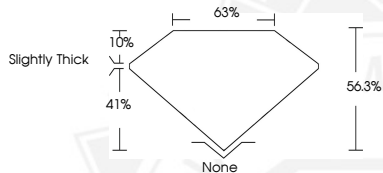
**ADDITIONAL GRADING INFORMATION**

Polish **VERY GOOD**  
Symmetry **EXCELLENT**  
Fluorescence **NONE**  
Inscription(s) **IGI LG786619786**

Comments: This Laboratory Grown Diamond was created by Chemical Vapor Deposition (CVD) growth process.  
Type IIa



Sample Image Used



March 31, 2026

**IGI Report Number LG786619786**  
**HEXAGONAL STEP CUT**  
**LABORATORY GROWN DIAMOND**  
**8.44 X 5.63 X 3.17 MM**

Carat Weight **0.93 CARAT**  
Color Grade **D**  
Clarity Grade **VVS 2**  
Polish **VERY GOOD**  
Symmetry **EXCELLENT**  
Fluorescence **NONE**  
Inscription(s) **IGI LG786619786**

Comments: This Laboratory Grown Diamond was created by Chemical Vapor Deposition (CVD) growth process. Type IIa



THIS DOCUMENT WAS PRODUCED WITH THE FOLLOWING SECURITY MEASURES: SPECIAL DOCUMENT PAPER, INK SCREENS, WATERMARK, BACKGROUND DESIGNS, HOLOGRAM AND OTHER SECURITY FEATURES NOT LISTED AND DO EXCEED DOCUMENT SECURITY INDUSTRY GUIDELINES.