



**ELECTRONIC COPY**

LG786619669  
Report verification at igi.org



March 25, 2026

IGI Report Number **LG786619669**

Description **LABORATORY GROWN DIAMOND**

Shape and Cutting Style **ROUND BRILLIANT**

Measurements **8.46 - 8.49 X 5.23 MM**

**GRADING RESULTS**

Carat Weight **2.30 CARATS**

Color Grade **D**

Clarity Grade **VVS 2**

Cut Grade **IDEAL**

March 25, 2026  
IGI Report Number **LG786619669**  
Description **LABORATORY GROWN DIAMOND**  
Shape and Cutting Style **ROUND BRILLIANT**  
Measurements **8.46 - 8.49 X 5.23 MM**

**GRADING RESULTS**

Carat Weight **2.30 CARATS**

Color Grade **D**

Clarity Grade **VVS 2**

Cut Grade **IDEAL**

**ADDITIONAL GRADING INFORMATION**

Polish **EXCELLENT**

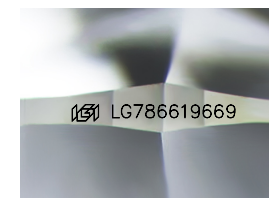
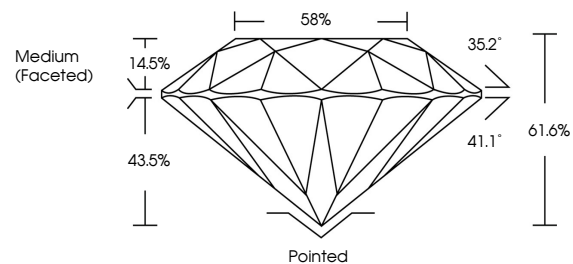
Symmetry **EXCELLENT**

Fluorescence **NONE**

Inscription(s) **LG786619669**

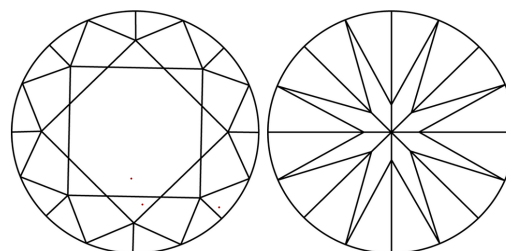
Comments: This Laboratory Grown Diamond was created by Chemical Vapor Deposition (CVD) growth process.  
Type IIa

**PROPORTIONS**



Sample Image Used

**CLARITY CHARACTERISTICS**



**KEY TO SYMBOLS**

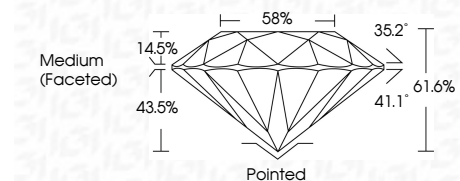
Red symbols indicate internal characteristics.  
Green symbols indicate external characteristics.

**COLOR**

D E F G H I J Faint Very Light Light

**CLARITY**

| FL       | IF                  | VVS <sup>1-2</sup>          | VS <sup>1-2</sup>      | SI <sup>1-2</sup> | I <sup>1-3</sup> |
|----------|---------------------|-----------------------------|------------------------|-------------------|------------------|
| Flawless | Internally Flawless | Very Very Slightly Included | Very Slightly Included | Slightly Included | Included         |



**ADDITIONAL GRADING INFORMATION**

Polish **EXCELLENT**

Symmetry **EXCELLENT**

Fluorescence **NONE**

Inscription(s) **LG786619669**

Comments: This Laboratory Grown Diamond was created by Chemical Vapor Deposition (CVD) growth process.  
Type IIa



**IGI**



|                 |                           |               |                  |                |             |
|-----------------|---------------------------|---------------|------------------|----------------|-------------|
| March 25, 2026  | IGI Report No LG786619669 | 2.30 CARATS   | D                | Pointed        | EXCELLENT   |
| ROUND BRILLIANT | 8.46 - 8.49 X 5.23 MM     | Color Grade   | VVS 2            | Symmetry       | EXCELLENT   |
|                 |                           | Clarity Grade | IDEAL            | Fluorescence   | NONE        |
|                 |                           | Depth         | 61.6%            | Inscription(s) | LG786619669 |
|                 |                           | Table         | 58%              |                |             |
|                 |                           | Grille        | Medium (Faceted) |                |             |

Comments: This Laboratory Grown Diamond was created by Chemical Vapor Deposition (CVD) growth process.  
Type IIa