



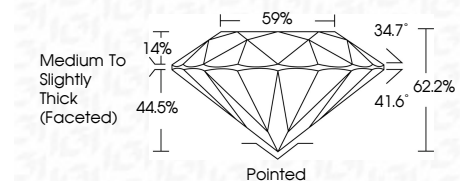
ELECTRONIC COPY

LG786616755
Report verification at igi.org



April 6, 2026
IGI Report Number **LG786616755**
Description **LABORATORY GROWN DIAMOND**
Shape and Cutting Style **ROUND BRILLIANT**
Measurements **6.57 - 6.64 X 4.10 MM**

GRADING RESULTS
Carat Weight **1.10 CARAT**
Color Grade **FANCY BROWN**
Clarity Grade **VS 1**
Cut Grade **EXCELLENT**



ADDITIONAL GRADING INFORMATION
Polish **VERY GOOD**
Symmetry **EXCELLENT**
Fluorescence **VERY SLIGHT**
Inscription(s) **IGI LG786616755**
Comments: This Laboratory Grown Diamond was created by Chemical Vapor Deposition (CVD) growth process. Indications of post-growth treatment.



April 6, 2026
IGI Report No LG786616755
ROUND BRILLIANT
6.57 - 6.64 X 4.10 MM
1.10 CARAT
FANCY BROWN
VS 1
EXCELLENT
62.2%
59%
Medium To Slightly Thick (Faceted)
Pointed
VERY GOOD
EXCELLENT
VERY SLIGHT
IGI LG786616755
Comments: This Laboratory Grown Diamond was created by Chemical Vapor Deposition (CVD) growth process. Indications of post-growth treatment.

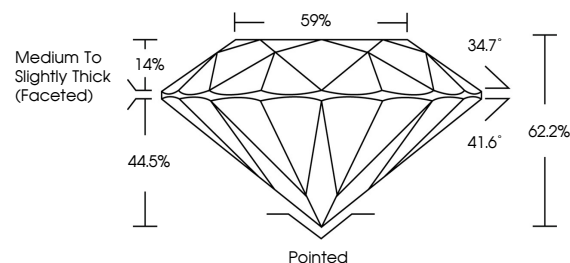
April 6, 2026
IGI Report Number **LG786616755**
Description **LABORATORY GROWN DIAMOND**
Shape and Cutting Style **ROUND BRILLIANT**
Measurements **6.57 - 6.64 X 4.10 MM**

GRADING RESULTS
Carat Weight **1.10 CARAT**
Color Grade **FANCY BROWN**
Clarity Grade **VS 1**
Cut Grade **EXCELLENT**

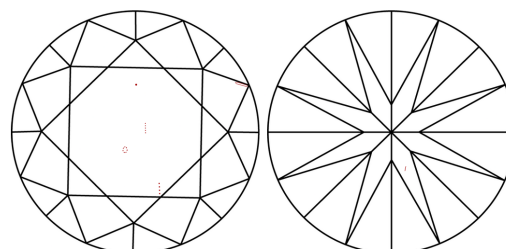
ADDITIONAL GRADING INFORMATION
Polish **VERY GOOD**
Symmetry **EXCELLENT**
Fluorescence **VERY SLIGHT**
Inscription(s) **IGI LG786616755**

Comments: This Laboratory Grown Diamond was created by Chemical Vapor Deposition (CVD) growth process. Indications of post-growth treatment.

PROPORTIONS

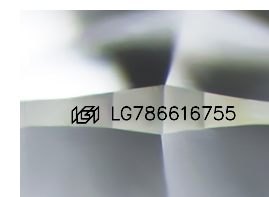


CLARITY CHARACTERISTICS



KEY TO SYMBOLS

Red symbols indicate internal characteristics.
Green symbols indicate external characteristics.



Sample Image Used

COLOR

D E F G H I J Faint Very Light Light

CLARITY

FL IF VS¹⁻² VS¹⁻² SI¹⁻² I¹⁻³

Flawless Internally Flawless Very Very Slightly Included Very Slightly Included Slightly Included Included

