



ELECTRONIC COPY

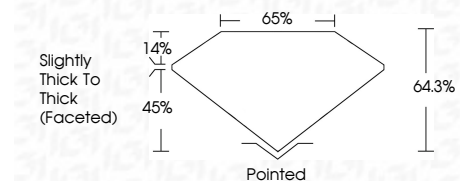
LG786616530
Report verification at igi.org



March 30, 2026
IGI Report Number **LG786616530**
Description **LABORATORY GROWN DIAMOND**
Shape and Cutting Style **OVAL MODIFIED BRILLIANT**
Measurements **12.87 X 8.77 X 5.64 MM**

GRADING RESULTS

Carat Weight **5.01 CARATS**
Color Grade **FANCY BROWN**
Clarity Grade **VS 2**



ADDITIONAL GRADING INFORMATION

Polish **EXCELLENT**
Symmetry **VERY GOOD**
Fluorescence **VERY SLIGHT**
Inscription(s) **IGI LG786616530**
Comments: This Laboratory Grown Diamond was created by Chemical Vapor Deposition (CVD) growth process. Indications of post-growth treatment.



March 30, 2026
IGI Report No LG786616530
OVAL MODIFIED BRILLIANT
12.87 X 8.77 X 5.64 MM
5.01 CARATS
FANCY BROWN
VS 2
64.3%
65%
Slightly Thick To Thick (Faceted)
Pointed
EXCELLENT
VERY GOOD
VERY SLIGHT
IGI LG786616530
Comments: This Laboratory Grown Diamond was created by Chemical Vapor Deposition (CVD) growth process. Indications of post-growth treatment.

March 30, 2026
IGI Report Number **LG786616530**
Description **LABORATORY GROWN DIAMOND**
Shape and Cutting Style **OVAL MODIFIED BRILLIANT**
Measurements **12.87 X 8.77 X 5.64 MM**

GRADING RESULTS

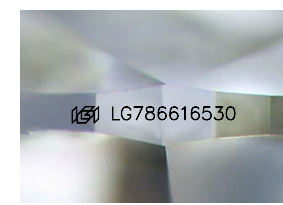
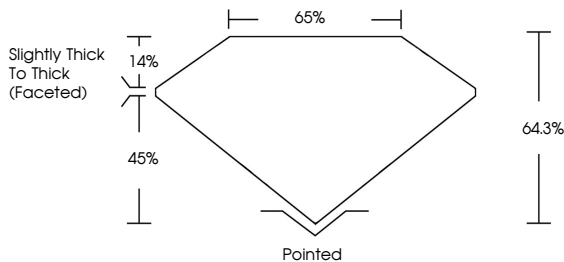
Carat Weight **5.01 CARATS**
Color Grade **FANCY BROWN**
Clarity Grade **VS 2**

ADDITIONAL GRADING INFORMATION

Polish **EXCELLENT**
Symmetry **VERY GOOD**
Fluorescence **VERY SLIGHT**
Inscription(s) **IGI LG786616530**

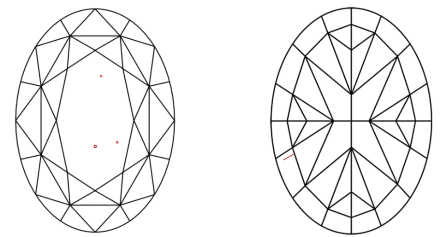
Comments: This Laboratory Grown Diamond was created by Chemical Vapor Deposition (CVD) growth process. Indications of post-growth treatment.

PROPORTIONS



Sample Image Used

CLARITY CHARACTERISTICS



KEY TO SYMBOLS

Red symbols indicate internal characteristics.
Green symbols indicate external characteristics.

COLOR

D	E	F	G	H	I	J	Faint	Very Light	Light
---	---	---	---	---	---	---	-------	------------	-------

CLARITY

FL	IF	VS ¹⁻²	VS ¹⁻²	SI ¹⁻²	I ¹⁻³
Flawless	Internally Flawless	Very Very Slightly Included	Very Slightly Included	Slightly Included	Included

