



ELECTRONIC COPY

LABORATORY GROWN DIAMOND REPORT

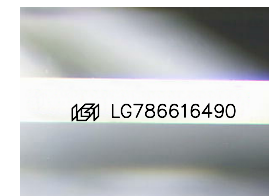
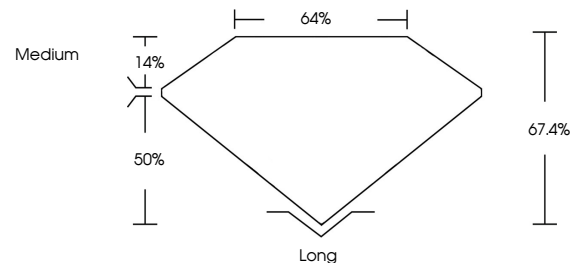
March 26, 2026
 IGI Report Number **LG786616490**
 Description **LABORATORY GROWN DIAMOND**
 Shape and Cutting Style **EMERALD CUT**
 Measurements **7.59 X 5.03 X 3.39 MM**
GRADING RESULTS
 Carat Weight **1.28 CARAT**
 Color Grade **E**
 Clarity Grade **VS 1**

ADDITIONAL GRADING INFORMATION

Polish **EXCELLENT**
 Symmetry **EXCELLENT**
 Fluorescence **NONE**
 Inscription(s) **IGI LG786616490**

Comments: This Laboratory Grown Diamond was created by Chemical Vapor Deposition (CVD) growth process.
 Type IIa

PROPORTIONS



Sample Image Used

COLOR

D E F G H I J Faint Very Light Light

CLARITY

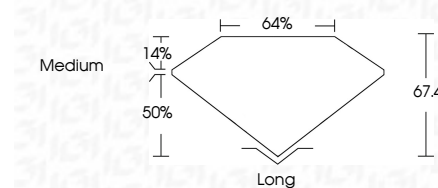
FL	IF	VS ¹⁻²	VS ¹⁻²	SI ¹⁻²	I ¹⁻³
Flawless	Internally Flawless	Very Very Slightly Included	Very Slightly Included	Slightly Included	Included



March 26, 2026
 IGI Report Number **LG786616490**
 Description **LABORATORY GROWN DIAMOND**
 Shape and Cutting Style **EMERALD CUT**
 Measurements **7.59 X 5.03 X 3.39 MM**
GRADING RESULTS
 Carat Weight **1.28 CARAT**
 Color Grade **E**
 Clarity Grade **VS 1**

ADDITIONAL GRADING INFORMATION

Polish **EXCELLENT**
 Symmetry **EXCELLENT**
 Fluorescence **NONE**
 Inscription(s) **IGI LG786616490**
 Comments: This Laboratory Grown Diamond was created by Chemical Vapor Deposition (CVD) growth process.
 Type IIa



March 26, 2026
 IGI Report No **LG786616490**
EMERALD CUT
 Carat Weight **1.28 CARAT**
 Color Grade **E**
 Clarity Grade **VS 1**
 Table **67.4%**
 Girdle **64%**
 Medium
 Long
 EXCELLENT
 EXCELLENT
 NONE
 IGI LG786616490
 Comments: This Laboratory Grown Diamond was created by Chemical Vapor Deposition (CVD) growth process.
 Type IIa