



**ELECTRONIC COPY**

LG786615496  
Report verification at [igi.org](http://igi.org)



April 17, 2026

IGI Report Number **LG786615496**

Description **LABORATORY GROWN DIAMOND**

Shape and Cutting Style **ROUND BRILLIANT**

Measurements **6.87 - 6.95 X 4.30 MM**

**GRADING RESULTS**

Carat Weight **1.26 CARAT**

Color Grade **D**

Clarity Grade **VVS 1**

Cut Grade **IDEAL**

April 17, 2026

IGI Report Number **LG786615496**

Description **LABORATORY GROWN DIAMOND**

Shape and Cutting Style **ROUND BRILLIANT**

Measurements **6.87 - 6.95 X 4.30 MM**

**GRADING RESULTS**

Carat Weight **1.26 CARAT**

Color Grade **D**

Clarity Grade **VVS 1**

Cut Grade **IDEAL**

**ADDITIONAL GRADING INFORMATION**

Polish **EXCELLENT**

Symmetry **EXCELLENT**

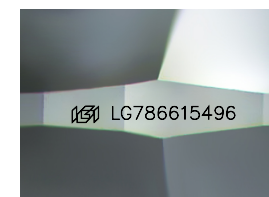
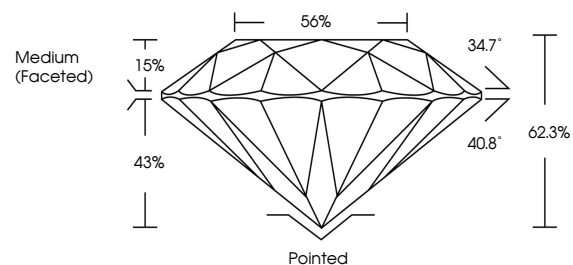
Fluorescence **NONE**

Inscription(s) **IGI LG786615496**

Comments: As Grown - No indication of post-growth treatment.

This Laboratory Grown Diamond was created by High Pressure High Temperature (HPHT) growth process. Type II

**PROPORTIONS**



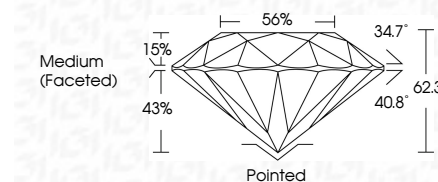
Sample Image Used

**COLOR**

D E F G H I J Faint Very Light Light

**CLARITY**

FL	IF	VVS <sup>1-2</sup>	VS <sup>1-2</sup>	SI <sup>1-2</sup>	I <sup>1-3</sup>
Flawless	Internally Flawless	Very Very Slightly Included	Very Slightly Included	Slightly Included	Included



**ADDITIONAL GRADING INFORMATION**

Polish **EXCELLENT**

Symmetry **EXCELLENT**

Fluorescence **NONE**

Inscription(s) **IGI LG786615496**

Comments: As Grown - No indication of post-growth treatment.

This Laboratory Grown Diamond was created by High Pressure High Temperature (HPHT) growth process. Type II



**IGI**



April 17, 2026	IGI Report No LG786615496	1.26 CARAT	D	Pointed
ROUND BRILLIANT	6.87 - 6.95 X 4.30 MM	VVS 1	IDEAL	EXCELLENT
Color Grade	Depth 62.3%	Cut Grade	66%	EXCELLENT
Clarity Grade	Girdle	Medium (Faceted)		NONE
Symmetry				IGI LG786615496
Fluorescence				
Inscription(s)				

Comments: As Grown - No indication of post-growth treatment. This Laboratory Grown Diamond was created by High Pressure High Temperature (HPHT) growth process. Type II