



**ELECTRONIC COPY**

**LABORATORY GROWN DIAMOND REPORT**

April 10, 2026  
IGI Report Number **LG786615264**

Description **LABORATORY GROWN DIAMOND**

Shape and Cutting Style **SQUARE CUSHION MODIFIED  
BRILLIANT**

Measurements **7.68 X 7.62 X 5.20 MM**

**GRADING RESULTS**

Carat Weight **2.59 CARATS**

Color Grade **H**

Clarity Grade **VVS 2**

**ADDITIONAL GRADING INFORMATION**

Polish **EXCELLENT**

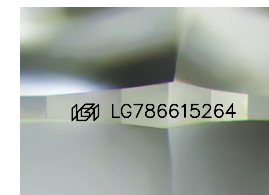
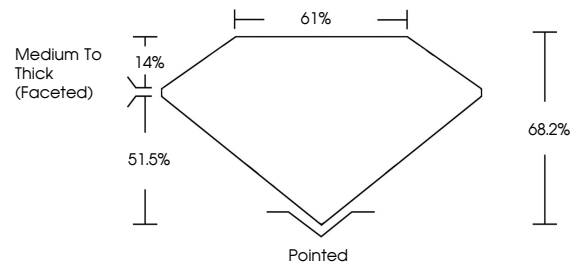
Symmetry **EXCELLENT**

Fluorescence **NONE**

Inscription(s) **IGI LG786615264**

Comments: This Laboratory Grown Diamond was created by Chemical Vapor Deposition (CVD) growth process.  
Type IIa

**PROPORTIONS**



Sample Image Used

**COLOR**

D E F G H I J Faint Very Light Light

**CLARITY**

FL	IF	VVS <sup>1-2</sup>	VS <sup>1-2</sup>	SI <sup>1-2</sup>	I <sup>1-3</sup>
Flawless	Internally Flawless	Very Very Slightly Included	Very Slightly Included	Slightly Included	Included



April 10, 2026

IGI Report Number **LG786615264**

Description **LABORATORY GROWN DIAMOND**

Shape and Cutting Style **SQUARE CUSHION MODIFIED  
BRILLIANT**

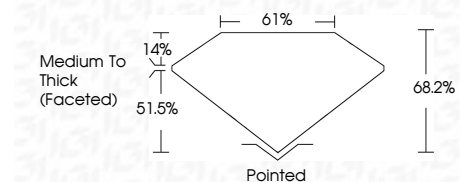
Measurements **7.68 X 7.62 X 5.20 MM**

**GRADING RESULTS**

Carat Weight **2.59 CARATS**

Color Grade **H**

Clarity Grade **VVS 2**



**ADDITIONAL GRADING INFORMATION**

Polish **EXCELLENT**

Symmetry **EXCELLENT**

Fluorescence **NONE**

Inscription(s) **IGI LG786615264**

Comments: This Laboratory Grown Diamond was created by Chemical Vapor Deposition (CVD) growth process.  
Type IIa



**IGI**



April 10, 2026  
IGI Report No LG786615264  
**SQUARE CUSHION MODIFIED BRILLIANT**  
7.68 X 7.62 X 5.20 MM  
2.59 CARATS  
H  
VVS 2  
68.2%  
61%  
Medium To Thick (Faceted)  
Pointed  
EXCELLENT  
EXCELLENT  
NONE  
IGI LG786615264  
Comments: This Laboratory Grown Diamond was created by Chemical Vapor Deposition (CVD) growth process.  
Type IIa