



March 23, 2026

IGI Report Number LG786613390
MARQUISE MODIFIED BRILLIANT
LABORATORY GROWN DIAMOND
6.67 X 3.67 X 2.44 MM

Carat Weight	0.41 CARAT
Color Grade	D
Clarity Grade	VS 1
Polish	VERY GOOD
Symmetry	GOOD
Fluorescence	NONE
Inscription(s)	IGI LG786613390

Comments: As Grown - No indication of post-growth treatment. This Laboratory Grown Diamond was created by High Pressure High Temperature (HPHT) growth process. Type II

LABORATORY GROWN DIAMOND REPORT

March 23, 2026
IGI Report Number **LG786613390**
Description **LABORATORY GROWN DIAMOND**
Shape and Cutting Style **MARQUISE MODIFIED BRILLIANT**
Measurements **6.67 X 3.67 X 2.44 MM**

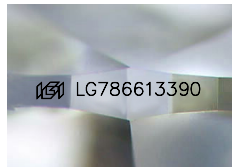
GRADING RESULTS

Carat Weight **0.41 CARAT**
Color Grade **D**
Clarity Grade **VS 1**

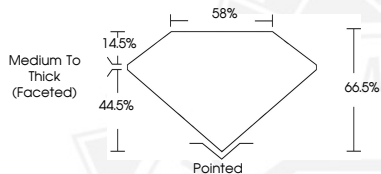
ADDITIONAL GRADING INFORMATION

Polish **VERY GOOD**
Symmetry **GOOD**
Fluorescence **NONE**
Inscription(s) **IGI LG786613390**

Comments: As Grown - No indication of post-growth treatment. This Laboratory Grown Diamond was created by High Pressure High Temperature (HPHT) growth process. Type II



Sample Image Used



March 23, 2026

IGI Report Number LG786613390
MARQUISE MODIFIED BRILLIANT
LABORATORY GROWN DIAMOND
6.67 X 3.67 X 2.44 MM

Carat Weight	0.41 CARAT
Color Grade	D
Clarity Grade	VS 1
Polish	VERY GOOD
Symmetry	GOOD
Fluorescence	NONE
Inscription(s)	IGI LG786613390

Comments: As Grown - No indication of post-growth treatment. This Laboratory Grown Diamond was created by High Pressure High Temperature (HPHT) growth process. Type II



THIS DOCUMENT WAS PRODUCED WITH THE FOLLOWING SECURITY MEASURES: SPECIAL DOCUMENT PAPER, INK SCREENS, WATERMARK, BACKGROUND DESIGNS, HOLOGRAM AND OTHER SECURITY FEATURES NOT LISTED AND DO EXCEED DOCUMENT SECURITY INDUSTRY GUIDELINES.