



LABORATORY GROWN DIAMOND REPORT

March 26, 2026
 IGI Report Number **LG786613386**
 Description **LABORATORY GROWN DIAMOND**
 Shape and Cutting Style **PEAR MODIFIED BRILLIANT**
 Measurements **5.90 X 3.71 X 2.22 MM**

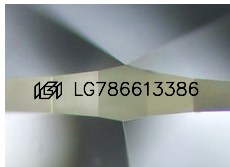
GRADING RESULTS

Carat Weight **0.35 CARAT**
 Color Grade **D**
 Clarity Grade **VS 1**

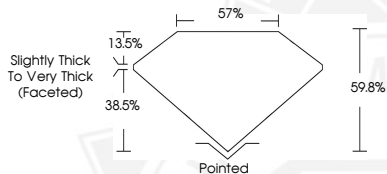
ADDITIONAL GRADING INFORMATION

Polish **VERY GOOD**
 Symmetry **VERY GOOD**
 Fluorescence **NONE**
 Inscription(s) **IGI LG786613386**

Comments: As Grown - No indication of post-growth treatment.
 This Laboratory Grown Diamond was created by High Pressure High Temperature (HPHT) growth process.
 Type II



Sample Image Used



March 26, 2026
 IGI Report Number **LG786613386**
PEAR MODIFIED BRILLIANT
LABORATORY GROWN DIAMOND
5.90 X 3.71 X 2.22 MM
 Carat Weight **0.35 CARAT**
 Color Grade **D**
 Clarity Grade **VS 1**
 Polish **VERY GOOD**
 Symmetry **VERY GOOD**
 Fluorescence **NONE**
 Inscription(s) **IGI LG786613386**

Comments: As Grown - No indication of post-growth treatment. This Laboratory Grown Diamond was created by High Pressure High Temperature (HPHT) growth process. Type II



March 26, 2026
 IGI Report Number **LG786613386**
PEAR MODIFIED BRILLIANT
LABORATORY GROWN DIAMOND
5.90 X 3.71 X 2.22 MM
 Carat Weight **0.35 CARAT**
 Color Grade **D**
 Clarity Grade **VS 1**
 Polish **VERY GOOD**
 Symmetry **VERY GOOD**
 Fluorescence **NONE**
 Inscription(s) **IGI LG786613386**

Comments: As Grown - No indication of post-growth treatment. This Laboratory Grown Diamond was created by High Pressure High Temperature (HPHT) growth process. Type II



THIS DOCUMENT WAS PRODUCED WITH THE FOLLOWING SECURITY MEASURES: SPECIAL DOCUMENT PAPER, INK SCREENS, WATERMARK, BACKGROUND DESIGNS, HOLOGRAM AND OTHER SECURITY FEATURES NOT LISTED AND DO EXCEED DOCUMENT SECURITY INDUSTRY GUIDELINES.