



LABORATORY GROWN DIAMOND REPORT

April 2, 2026
 IGI Report Number **LG786613376**
 Description **LABORATORY GROWN DIAMOND**
 Shape and Cutting Style **OVAL MODIFIED BRILLIANT**
 Measurements **7.00 X 5.19 X 3.15 MM**

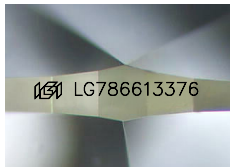
GRADING RESULTS

Carat Weight **0.92 CARAT**
 Color Grade **FANCY LIGHT BLUE**
 Clarity Grade **VVS 2**

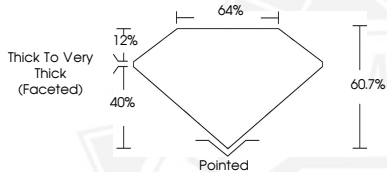
ADDITIONAL GRADING INFORMATION

Polish **VERY GOOD**
 Symmetry **VERY GOOD**
 Fluorescence **NONE**
 Inscription(s) **IGI LG786613376**

Comments: As Grown - No indication of post-growth treatment. This Laboratory Grown Diamond was created by High Pressure High Temperature (HPHT) growth process.



Sample Image Used



April 2, 2026
 IGI Report Number **LG786613376**
 OVAL MODIFIED BRILLIANT
 LABORATORY GROWN DIAMOND
 7.00 X 5.19 X 3.15 MM
 Carat Weight **0.92 CARAT**
 Color Grade **FANCY LIGHT BLUE**
 Clarity Grade **VVS 2**
 Polish **VERY GOOD**
 Symmetry **VERY GOOD**
 Fluorescence **NONE**
 Inscription(s) **IGI LG786613376**

Comments: As Grown - No indication of post-growth treatment. This Laboratory Grown Diamond was created by High Pressure High Temperature (HPHT) growth process.



April 2, 2026
 IGI Report Number **LG786613376**
 OVAL MODIFIED BRILLIANT
 LABORATORY GROWN DIAMOND
 7.00 X 5.19 X 3.15 MM
 Carat Weight **0.92 CARAT**
 Color Grade **FANCY LIGHT BLUE**
 Clarity Grade **VVS 2**
 Polish **VERY GOOD**
 Symmetry **VERY GOOD**
 Fluorescence **NONE**
 Inscription(s) **IGI LG786613376**

Comments: As Grown - No indication of post-growth treatment. This Laboratory Grown Diamond was created by High Pressure High Temperature (HPHT) growth process.



THIS DOCUMENT WAS PRODUCED WITH THE FOLLOWING SECURITY MEASURES: SPECIAL DOCUMENT PAPER, INK SCREENS, WATERMARK, BACKGROUND DESIGNS, HOLOGRAM AND OTHER SECURITY FEATURES NOT LISTED AND DO EXCEED DOCUMENT SECURITY INDUSTRY GUIDELINES.