



March 27, 2026

**IGI Report Number** LG786613363  
**OVAL MODIFIED BRILLIANT**  
**LABORATORY GROWN DIAMOND**  
**6.97 X 4.96 X 3.08 MM**

**Carat Weight** 0.85 CARAT  
**Color Grade** FANCY LIGHT BLUE  
**Clarity Grade** VVS 2  
**Polish** VERY GOOD  
**Symmetry** VERY GOOD  
**Fluorescence** NONE  
**Inscription(s)** IGI LG786613363

Comments: As Grown - No indication of post-growth treatment. This Laboratory Grown Diamond was created by High Pressure High Temperature (HPHT) growth process.

**LABORATORY GROWN DIAMOND REPORT**

March 27, 2026  
IGI Report Number **LG786613363**  
Description **LABORATORY GROWN DIAMOND**  
Shape and Cutting Style **OVAL MODIFIED BRILLIANT**  
Measurements **6.97 X 4.96 X 3.08 MM**

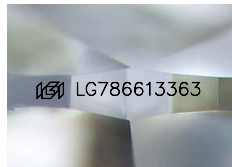
**GRADING RESULTS**

**Carat Weight** 0.85 CARAT  
**Color Grade** FANCY LIGHT BLUE  
**Clarity Grade** VVS 2

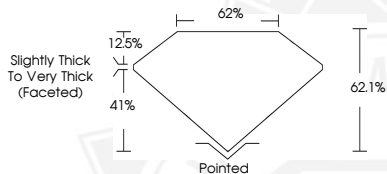
**ADDITIONAL GRADING INFORMATION**

**Polish** VERY GOOD  
**Symmetry** VERY GOOD  
**Fluorescence** NONE  
**Inscription(s)** IGI LG786613363

Comments: As Grown - No indication of post-growth treatment. This Laboratory Grown Diamond was created by High Pressure High Temperature (HPHT) growth process.



Sample Image Used



March 27, 2026

**IGI Report Number** LG786613363  
**OVAL MODIFIED BRILLIANT**  
**LABORATORY GROWN DIAMOND**  
**6.97 X 4.96 X 3.08 MM**

**Carat Weight** 0.85 CARAT  
**Color Grade** FANCY LIGHT BLUE  
**Clarity Grade** VVS 2  
**Polish** VERY GOOD  
**Symmetry** VERY GOOD  
**Fluorescence** NONE  
**Inscription(s)** IGI LG786613363

Comments: As Grown - No indication of post-growth treatment. This Laboratory Grown Diamond was created by High Pressure High Temperature (HPHT) growth process.



THIS DOCUMENT WAS PRODUCED WITH THE FOLLOWING SECURITY MEASURES: SPECIAL DOCUMENT PAPER, INK SCREENS, WATERMARK, BACKGROUND DESIGNS, HOLOGRAM AND OTHER SECURITY FEATURES NOT LISTED AND DO EXCEED DOCUMENT SECURITY INDUSTRY GUIDELINES.