



March 27, 2026

IGI Report Number LG786613355
SQUARE CUSHION MODIFIED
BRILLIANT

LABORATORY GROWN DIAMOND
4.97 X 4.88 X 3.18 MM

Carat Weight **0.71 CARAT**
Color Grade **FANCY LIGHT BLUE**
Clarity Grade **VS 2**
Polish **VERY GOOD**
Symmetry **VERY GOOD**
Fluorescence **NONE**
Inscription(s) **IGI LG786613355**

Comments: As Grown - No indication of post-growth treatment. This Laboratory Grown Diamond was created by High Pressure High Temperature (HPHT) growth process.

LABORATORY GROWN DIAMOND REPORT

March 27, 2026
IGI Report Number **LG786613355**
Description **LABORATORY GROWN DIAMOND**
Shape and Cutting Style **SQUARE CUSHION MODIFIED BRILLIANT**
Measurements **4.97 X 4.88 X 3.18 MM**

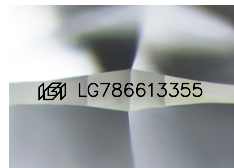
GRADING RESULTS

Carat Weight **0.71 CARAT**
Color Grade **FANCY LIGHT BLUE**
Clarity Grade **VS 2**

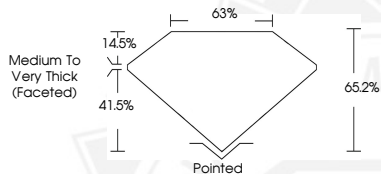
ADDITIONAL GRADING INFORMATION

Polish **VERY GOOD**
Symmetry **VERY GOOD**
Fluorescence **NONE**
Inscription(s) **IGI LG786613355**

Comments: As Grown - No indication of post-growth treatment. This Laboratory Grown Diamond was created by High Pressure High Temperature (HPHT) growth process.



Sample Image Used



March 27, 2026

IGI Report Number LG786613355
SQUARE CUSHION MODIFIED
BRILLIANT

LABORATORY GROWN DIAMOND
4.97 X 4.88 X 3.18 MM

Carat Weight **0.71 CARAT**
Color Grade **FANCY LIGHT BLUE**
Clarity Grade **VS 2**
Polish **VERY GOOD**
Symmetry **VERY GOOD**
Fluorescence **NONE**
Inscription(s) **IGI LG786613355**

Comments: As Grown - No indication of post-growth treatment. This Laboratory Grown Diamond was created by High Pressure High Temperature (HPHT) growth process.



THIS DOCUMENT WAS PRODUCED WITH THE FOLLOWING SECURITY MEASURES: SPECIAL DOCUMENT PAPER, INK SCREENS, WATERMARK, BACKGROUND DESIGNS, HOLOGRAM AND OTHER SECURITY FEATURES NOT LISTED AND DO EXCEED DOCUMENT SECURITY INDUSTRY GUIDELINES.