



ELECTRONIC COPY

LG786613310
Report verification at igi.org



March 26, 2026
IGI Report Number **LG786613310**
Description **LABORATORY GROWN DIAMOND**
Shape and Cutting Style **HEXAGONAL MODIFIED STEP CUT**
Measurements **18.08 X 9.43 X 5.43 MM**
GRADING RESULTS
Carat Weight **7.22 CARATS**
Color Grade **F**
Clarity Grade **VS 1**

March 26, 2026
IGI Report Number **LG786613310**
Description **LABORATORY GROWN DIAMOND**
Shape and Cutting Style **HEXAGONAL MODIFIED STEP CUT**
Measurements **18.08 X 9.43 X 5.43 MM**

GRADING RESULTS

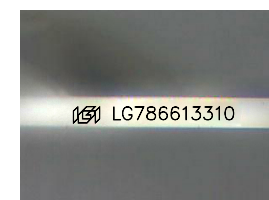
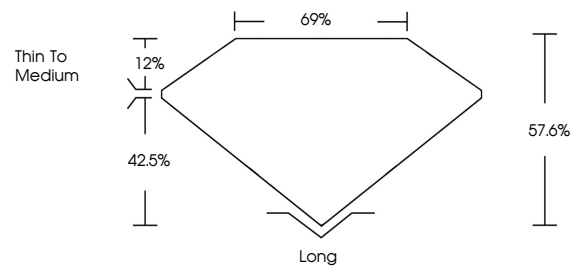
Carat Weight **7.22 CARATS**
Color Grade **F**
Clarity Grade **VS 1**

ADDITIONAL GRADING INFORMATION

Polish **EXCELLENT**
Symmetry **EXCELLENT**
Fluorescence **NONE**
Inscription(s) **IGI LG786613310**

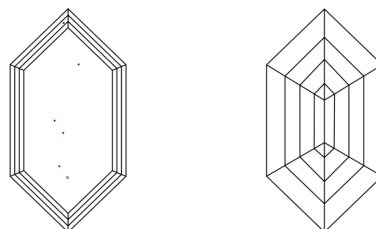
Comments: This Laboratory Grown Diamond was created by Chemical Vapor Deposition (CVD) growth process.
Type IIa

PROPORTIONS



Sample Image Used

CLARITY CHARACTERISTICS



KEY TO SYMBOLS

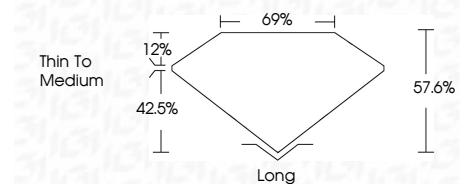
Red symbols indicate internal characteristics.
Green symbols indicate external characteristics.

COLOR

D E F G H I J Faint Very Light Light

CLARITY

FL	IF	VS ¹⁻²	VS ¹⁻²	SI ¹⁻²	I ¹⁻³
Flawless	Internally Flawless	Very Very Slightly Included	Very Slightly Included	Slightly Included	Included



ADDITIONAL GRADING INFORMATION

Polish **EXCELLENT**
Symmetry **EXCELLENT**
Fluorescence **NONE**
Inscription(s) **IGI LG786613310**
Comments: This Laboratory Grown Diamond was created by Chemical Vapor Deposition (CVD) growth process.
Type IIa



March 26, 2026
IGI Report No LG786613310
HEXAGONAL MODIFIED STEP CUT
18.08 X 9.43 X 5.43 MM
7.22 CARATS
F
VS 1
57.6%
69%
Thin To Medium
Long
EXCELLENT
EXCELLENT
NONE
IGI LG786613310
Comments: This Laboratory Grown Diamond was created by Chemical Vapor Deposition (CVD) growth process.
Type IIa