



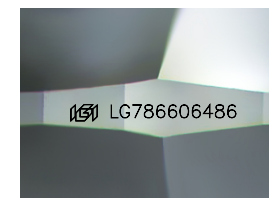
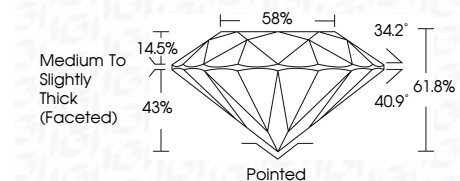
ELECTRONIC COPY

LG786606486
Report verification at igi.org



March 27, 2026
IGI Report Number LG786606486
Description LABORATORY GROWN DIAMOND
Shape and Cutting Style ROUND BRILLIANT
Measurements 7.37 - 7.41 X 4.57 MM

GRADING RESULTS
Carat Weight 1.55 CARAT
Color Grade G
Clarity Grade VVS 2
Cut Grade EXCELLENT



Sample Image Used

ADDITIONAL GRADING INFORMATION
Polish EXCELLENT
Symmetry EXCELLENT
Fluorescence NONE
Inscription(s) IGI LG786606486
Comments: This Laboratory Grown Diamond was created by Chemical Vapor Deposition (CVD) growth process. Type IIa



March 27, 2026
IGI Report No LG786606486
ROUND BRILLIANT
1.55 CARAT G
7.37 - 7.41 X 4.57 MM
Carat Weight 1.55 CARAT
Color Grade G
Clarity Grade VVS 2
Cut Grade EXCELLENT
Depth 61.8%
Table 58%
Girdle Medium To Slightly Thick (Faceted)
Culet Pointed
Polish EXCELLENT
Symmetry EXCELLENT
Fluorescence NONE
Inscription(s) IGI LG786606486
Comments: This Laboratory Grown Diamond was created by Chemical Vapor Deposition (CVD) growth process. Type IIa

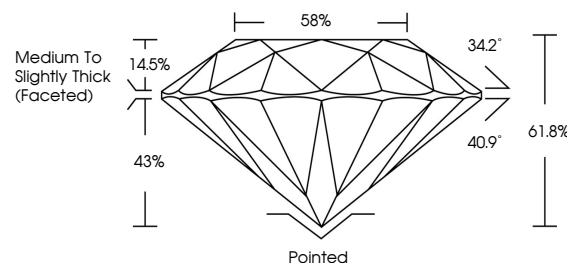
March 27, 2026
IGI Report Number LG786606486
Description LABORATORY GROWN DIAMOND
Shape and Cutting Style ROUND BRILLIANT
Measurements 7.37 - 7.41 X 4.57 MM

GRADING RESULTS
Carat Weight 1.55 CARAT
Color Grade G
Clarity Grade VVS 2
Cut Grade EXCELLENT

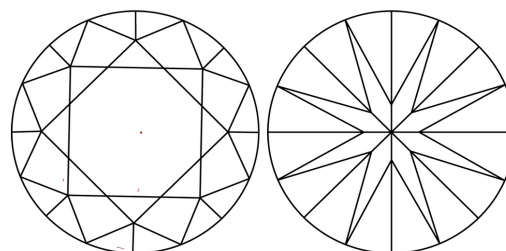
ADDITIONAL GRADING INFORMATION
Polish EXCELLENT
Symmetry EXCELLENT
Fluorescence NONE
Inscription(s) IGI LG786606486

Comments: This Laboratory Grown Diamond was created by Chemical Vapor Deposition (CVD) growth process. Type IIa

PROPORTIONS



CLARITY CHARACTERISTICS



KEY TO SYMBOLS

Red symbols indicate internal characteristics.
Green symbols indicate external characteristics.

COLOR

D E F G H I J Faint Very Light Light

CLARITY

FL IF VVS 1-2 VS 1-2 SI 1-2 I 1-3
Flawless Internally Flawless Very Very Slightly Included Very Slightly Included Slightly Included Included

