



ELECTRONIC COPY

LG786604895
Report verification at igi.org

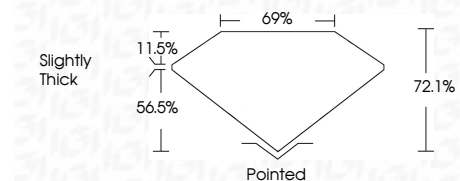


March 25, 2026
IGI Report Number **LG786604895**
Description **LABORATORY GROWN DIAMOND**

Shape and Cutting Style **PRINCESS CUT**
Measurements **6.32 X 6.28 X 4.53 MM**

GRADING RESULTS

Carat Weight **1.55 CARAT**
Color Grade **F**
Clarity Grade **VVS 2**



ADDITIONAL GRADING INFORMATION

Polish **EXCELLENT**
Symmetry **EXCELLENT**
Fluorescence **NONE**
Inscription(s) **IGI LG786604895**
Comments: This Laboratory Grown Diamond was created by Chemical Vapor Deposition (CVD) growth process. Type IIa



March 25, 2026
IGI Report No **LG786604895**
PRINCESS CUT
6.32 X 6.28 X 4.53 MM
Carat Weight **1.55 CARAT**
Color Grade **F**
Clarity Grade **VVS 2**
Table **72.1%**
Girdle **69%**
Culet **Slightly Thick**
Polish **Excellent**
Symmetry **Excellent**
Fluorescence **NONE**
Inscription(s) **IGI LG786604895**
Comments: This Laboratory Grown Diamond was created by Chemical Vapor Deposition (CVD) growth process. Type IIa

LABORATORY GROWN DIAMOND REPORT

March 25, 2026
IGI Report Number **LG786604895**
Description **LABORATORY GROWN DIAMOND**
Shape and Cutting Style **PRINCESS CUT**
Measurements **6.32 X 6.28 X 4.53 MM**

GRADING RESULTS

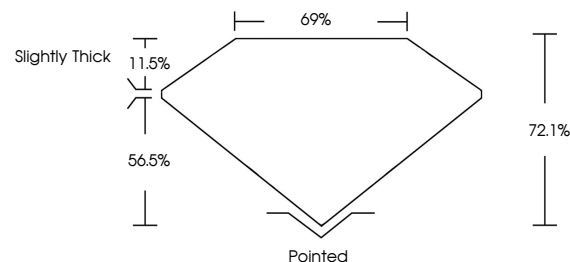
Carat Weight **1.55 CARAT**
Color Grade **F**
Clarity Grade **VVS 2**

ADDITIONAL GRADING INFORMATION

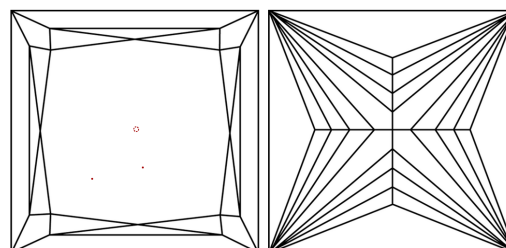
Polish **EXCELLENT**
Symmetry **EXCELLENT**
Fluorescence **NONE**
Inscription(s) **IGI LG786604895**

Comments: This Laboratory Grown Diamond was created by Chemical Vapor Deposition (CVD) growth process. Type IIa

PROPORTIONS

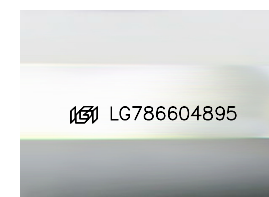


CLARITY CHARACTERISTICS



KEY TO SYMBOLS

Red symbols indicate internal characteristics.
Green symbols indicate external characteristics.



Sample Image Used

COLOR

D E F G H I J Faint Very Light Light

CLARITY

FL	IF	VVS ¹⁻²	VS ¹⁻²	SI ¹⁻²	I ¹⁻³
Flawless	Internally Flawless	Very Very Slightly Included	Very Slightly Included	Slightly Included	Included

