



**ELECTRONIC COPY**

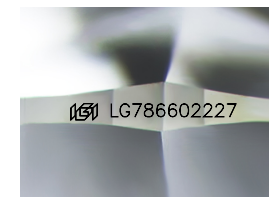
LG786602227  
Report verification at igi.org



March 27, 2026  
IGI Report Number **LG786602227**  
Description **LABORATORY GROWN DIAMOND**  
Shape and Cutting Style **ROUND BRILLIANT**  
Measurements **7.41 - 7.46 X 4.55 MM**

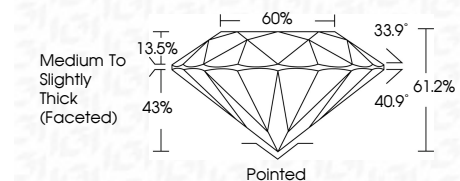
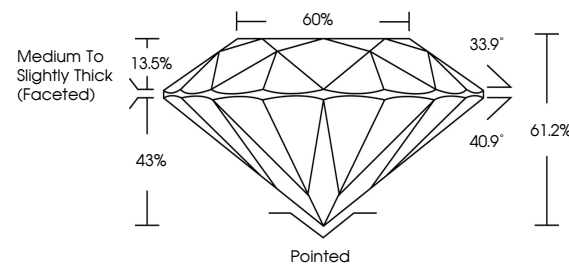
**GRADING RESULTS**

Carat Weight **1.56 CARAT**  
Color Grade **D**  
Clarity Grade **VS 2**  
Cut Grade **EXCELLENT**

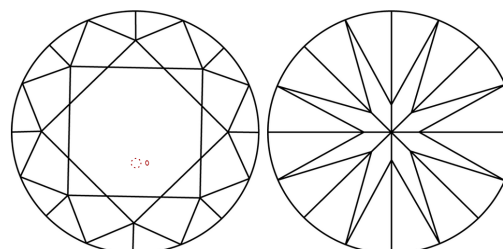


Sample Image Used

**PROPORTIONS**



**CLARITY CHARACTERISTICS**



**KEY TO SYMBOLS**

Red symbols indicate internal characteristics.  
Green symbols indicate external characteristics.

**COLOR**

D E F G H I J Faint Very Light Light

**CLARITY**

FL	IF	VS <sup>1-2</sup>	VS <sup>1-2</sup>	SI <sup>1-2</sup>	I <sup>1-3</sup>
Flawless	Internally Flawless	Very Very Slightly Included	Very Slightly Included	Slightly Included	Included

**ADDITIONAL GRADING INFORMATION**

Polish **EXCELLENT**  
Symmetry **EXCELLENT**  
Fluorescence **NONE**  
Inscription(s) **IGI LG786602227**  
Comments: This Laboratory Grown Diamond was created by Chemical Vapor Deposition (CVD) growth process. Type IIa



March 27, 2026  
IGI Report No LG786602227  
ROUND BRILLIANT  
1.56 CARAT  
Color Grade D  
Clarity Grade VS 2  
Depth 61.2%  
Table 60%  
Medium To Slightly Thick (Faceted)  
Cutler Pointed  
Polish EXCELLENT  
Symmetry EXCELLENT  
Fluorescence NONE  
Inscription(s) IGI LG786602227  
Comments: This Laboratory Grown Diamond was created by Chemical Vapor Deposition (CVD) growth process. Type IIa