



ELECTRONIC COPY

LG786601645
Report verification at igi.org



March 27, 2026
IGI Report Number **LG786601645**
Description **LABORATORY GROWN DIAMOND**
Shape and Cutting Style **CUT CORNERED
RECTANGULAR MODIFIED
BRILLIANT**
Measurements **11.49 X 7.74 X 4.93 MM**
GRADING RESULTS
Carat Weight **3.96 CARATS**
Color Grade **FANCY VIVID PINK**
Clarity Grade **VS 1**

March 27, 2026
IGI Report Number **LG786601645**
Description **LABORATORY GROWN DIAMOND**
Shape and Cutting Style **CUT CORNERED RECTANGULAR
MODIFIED BRILLIANT**
Measurements **11.49 X 7.74 X 4.93 MM**

GRADING RESULTS

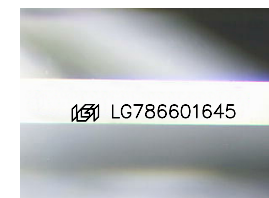
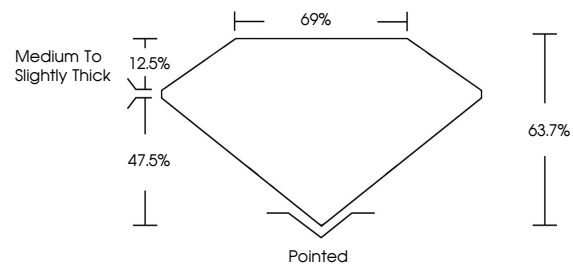
Carat Weight **3.96 CARATS**
Color Grade **FANCY VIVID PINK**
Clarity Grade **VS 1**

ADDITIONAL GRADING INFORMATION

Polish **EXCELLENT**
Symmetry **EXCELLENT**
Fluorescence **SLIGHT**
Inscription(s) **IGI LG786601645**

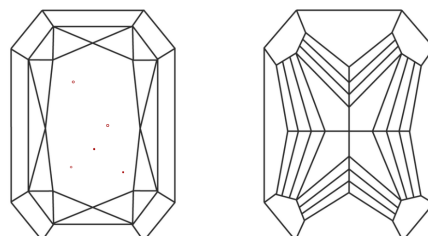
Comments: This Laboratory Grown Diamond was created by Chemical Vapor Deposition (CVD) growth process. Indications of post-growth treatment.

PROPORTIONS



Sample Image Used

CLARITY CHARACTERISTICS



KEY TO SYMBOLS

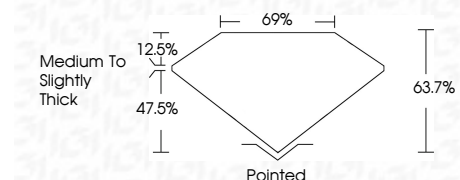
Red symbols indicate internal characteristics.
Green symbols indicate external characteristics.

COLOR

D E F G H I J Faint Very Light Light

CLARITY

FL	IF	VS ¹⁻²	VS ¹⁻²	SI ¹⁻²	I ¹⁻³
Flawless	Internally Flawless	Very Very Slightly Included	Very Slightly Included	Slightly Included	Included



ADDITIONAL GRADING INFORMATION

Polish **EXCELLENT**
Symmetry **EXCELLENT**
Fluorescence **SLIGHT**
Inscription(s) **IGI LG786601645**
Comments: This Laboratory Grown Diamond was created by Chemical Vapor Deposition (CVD) growth process. Indications of post-growth treatment.



March 27, 2026
IGI Report No LG786601645
CUT CORNERED RECT. MODIFIED BRILLIANT
11.49 X 7.74 X 4.93 MM
3.96 CARATS
FANCY VIVID PINK
VS 1
63.7%
69%
Medium to Slightly Thick
Pointed
EXCELLENT
EXCELLENT
SLIGHT
IGI LG786601645
Comments: This Laboratory Grown Diamond was created by Chemical Vapor Deposition (CVD) growth process. Indications of post-growth treatment.