



ELECTRONIC COPY

LG785616875
Report verification at igi.org



March 25, 2026

IGI Report Number **LG785616875**

Description **LABORATORY GROWN DIAMOND**

Shape and Cutting Style **PRINCESS CUT**

Measurements **7.60 X 7.57 X 5.16 MM**

GRADING RESULTS

Carat Weight **2.51 CARATS**

Color Grade **E**

Clarity Grade **VVS 2**

March 25, 2026
IGI Report Number **LG785616875**
Description **LABORATORY GROWN DIAMOND**
Shape and Cutting Style **PRINCESS CUT**
Measurements **7.60 X 7.57 X 5.16 MM**

GRADING RESULTS

Carat Weight **2.51 CARATS**

Color Grade **E**

Clarity Grade **VVS 2**

ADDITIONAL GRADING INFORMATION

Polish **EXCELLENT**

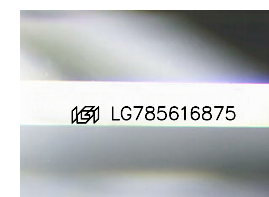
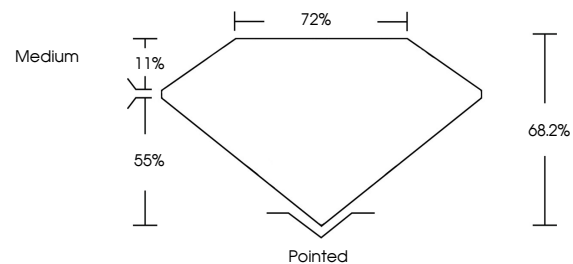
Symmetry **EXCELLENT**

Fluorescence **NONE**

Inscription(s) **IGI LG785616875**

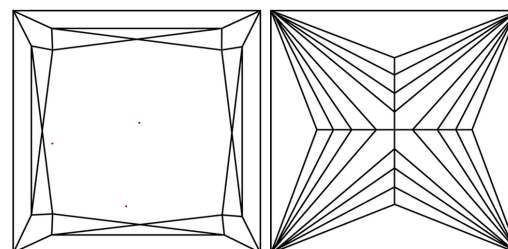
Comments: This Laboratory Grown Diamond was created by Chemical Vapor Deposition (CVD) growth process.
Type IIa

PROPORTIONS



Sample Image Used

CLARITY CHARACTERISTICS



KEY TO SYMBOLS

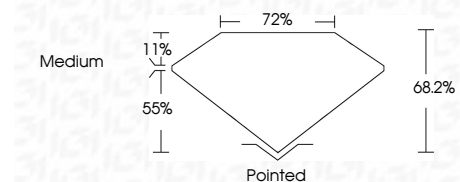
Red symbols indicate internal characteristics.
Green symbols indicate external characteristics.

COLOR

D E F G H I J Faint Very Light Light

CLARITY

FL	IF	VVS ¹⁻²	VS ¹⁻²	SI ¹⁻²	I ¹⁻³
Flawless	Internally Flawless	Very Very Slightly Included	Very Slightly Included	Slightly Included	Included



ADDITIONAL GRADING INFORMATION

Polish **EXCELLENT**

Symmetry **EXCELLENT**

Fluorescence **NONE**

Inscription(s) **IGI LG785616875**

Comments: This Laboratory Grown Diamond was created by Chemical Vapor Deposition (CVD) growth process.
Type IIa



IGI



March 25, 2026
IGI Report No LG785616875
PRINCESS CUT
7.60 X 7.57 X 5.16 MM
2.51 CARATS
E
VVS 2
68.2%
72%
Medium
Pointed
EXCELLENT
EXCELLENT
NONE
IGI LG785616875
Comments: This Laboratory Grown Diamond was created by Chemical Vapor Deposition (CVD) growth process.
Type IIa