



**ELECTRONIC COPY**

LG785614649  
Report verification at igi.org



April 4, 2026  
IGI Report Number **LG785614649**  
Description **LABORATORY GROWN DIAMOND**  
Shape and Cutting Style **CUSHION MODIFIED BRILLIANT**  
Measurements **10.92 X 8.21 X 5.76 MM**  
**GRADING RESULTS**  
Carat Weight **4.61 CARATS**  
Color Grade **FANCY VIVID PINK**  
Clarity Grade **SI 1**

**LABORATORY GROWN DIAMOND REPORT**

April 4, 2026  
IGI Report Number **LG785614649**  
Description **LABORATORY GROWN DIAMOND**  
Shape and Cutting Style **CUSHION MODIFIED BRILLIANT**  
Measurements **10.92 X 8.21 X 5.76 MM**

**GRADING RESULTS**

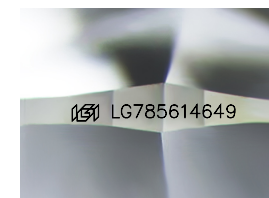
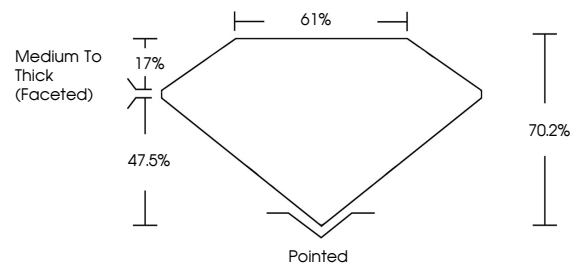
Carat Weight **4.61 CARATS**  
Color Grade **FANCY VIVID PINK**  
Clarity Grade **SI 1**

**ADDITIONAL GRADING INFORMATION**

Polish **EXCELLENT**  
Symmetry **EXCELLENT**  
Fluorescence **SLIGHT**  
Inscription(s) **LG785614649**

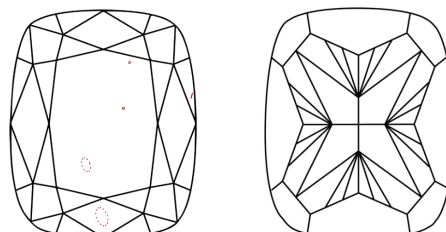
Comments: This Laboratory Grown Diamond was created by Chemical Vapor Deposition (CVD) growth process.  
Indications of post-growth treatment.

**PROPORTIONS**



Sample Image Used

**CLARITY CHARACTERISTICS**



**KEY TO SYMBOLS**

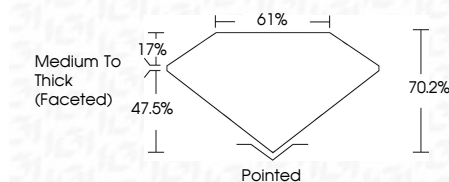
Red symbols indicate internal characteristics.  
Green symbols indicate external characteristics.

**COLOR**

D E F G H I J Faint Very Light Light

**CLARITY**

FL	IF	VS <sup>1-2</sup>	VS <sup>1-2</sup>	SI <sup>1-2</sup>	I <sup>1-3</sup>
Flawless	Internally Flawless	Very Very Slightly Included	Very Slightly Included	Slightly Included	Included



**ADDITIONAL GRADING INFORMATION**

Polish **EXCELLENT**  
Symmetry **EXCELLENT**  
Fluorescence **SLIGHT**  
Inscription(s) **LG785614649**  
Comments: This Laboratory Grown Diamond was created by Chemical Vapor Deposition (CVD) growth process.  
Indications of post-growth treatment.



**IGI**



April 4, 2026  
IGI Report No **LG785614649**  
**CUSHION MODIFIED BRILLIANT**

**4.61 CARATS**  
**FANCY VIVID PINK**  
SI 1  
70.2%  
61%  
Medium To Thick (Faceted)  
Pointed  
EXCELLENT  
EXCELLENT  
SLIGHT  
 **LG785614649**

Comments: This Laboratory Grown Diamond was created by Chemical Vapor Deposition (CVD) growth process.  
Indications of post-growth treatment.