



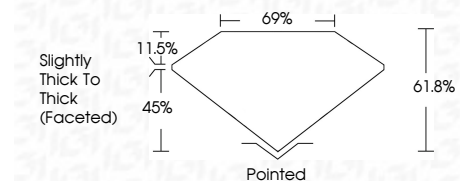
ELECTRONIC COPY

LG785614585
Report verification at igi.org



April 2, 2026
IGI Report Number **LG785614585**
Description **LABORATORY GROWN DIAMOND**
Shape and Cutting Style **PEAR MODIFIED BRILLIANT**
Measurements **9.33 X 5.84 X 3.61 MM**

GRADING RESULTS
Carat Weight **1.35 CARAT**
Color Grade **FANCY VIVID BLUE**
Clarity Grade **VVS 2**



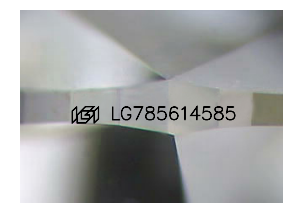
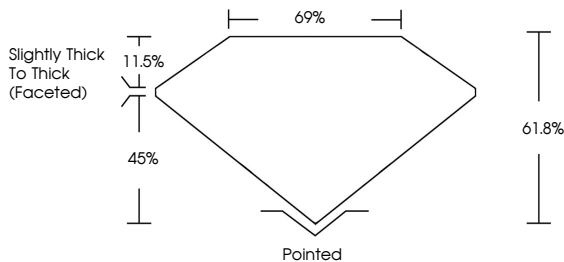
ADDITIONAL GRADING INFORMATION
Polish **VERY GOOD**
Symmetry **VERY GOOD**
Fluorescence **NONE**
Inscription(s) **IGI LG785614585**
Comments: This Laboratory Grown Diamond was created by Chemical Vapor Deposition (CVD) growth process. Indications of post-growth treatment.



April 2, 2026
IGI Report No **LG785614585**
PEAR MODIFIED BRILLIANT
9.33 X 5.84 X 3.61 MM
1.35 CARAT
FANCY VIVID BLUE
VVS 2
61.8%
45%
Slightly Thick To Thick (Faceted)
Pointed
VERY GOOD
VERY GOOD
NONE
IGI LG785614585
Comments: This Laboratory Grown Diamond was created by Chemical Vapor Deposition (CVD) growth process. Indications of post-growth treatment.

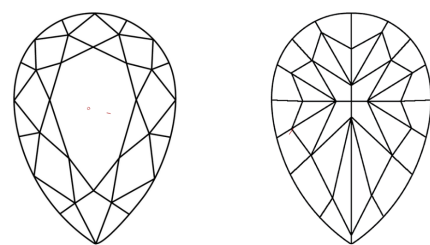
April 2, 2026
IGI Report Number **LG785614585**
Description **LABORATORY GROWN DIAMOND**
Shape and Cutting Style **PEAR MODIFIED BRILLIANT**
Measurements **9.33 X 5.84 X 3.61 MM**
GRADING RESULTS
Carat Weight **1.35 CARAT**
Color Grade **FANCY VIVID BLUE**
Clarity Grade **VVS 2**
ADDITIONAL GRADING INFORMATION
Polish **VERY GOOD**
Symmetry **VERY GOOD**
Fluorescence **NONE**
Inscription(s) **IGI LG785614585**
Comments: This Laboratory Grown Diamond was created by Chemical Vapor Deposition (CVD) growth process. Indications of post-growth treatment.

PROPORTIONS



Sample Image Used

CLARITY CHARACTERISTICS



KEY TO SYMBOLS
Red symbols indicate internal characteristics.
Green symbols indicate external characteristics.

COLOR

D	E	F	G	H	I	J	Faint	Very Light	Light
---	---	---	---	---	---	---	-------	------------	-------

CLARITY

FL	IF	VVS ¹⁻²	VS ¹⁻²	SI ¹⁻²	I ¹⁻³
Flawless	Internally Flawless	Very Very Slightly Included	Very Slightly Included	Slightly Included	Included

