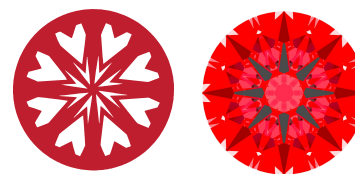
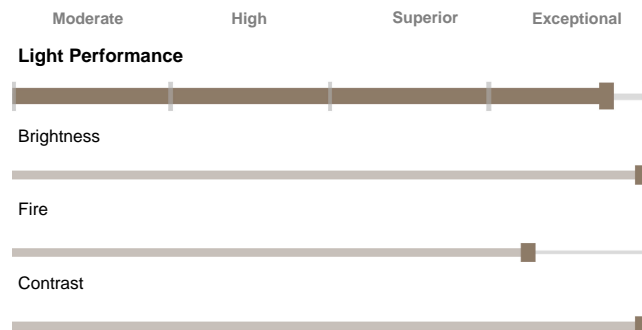




Light Performance Grade: Exceptional



Structured Light Environment Representation



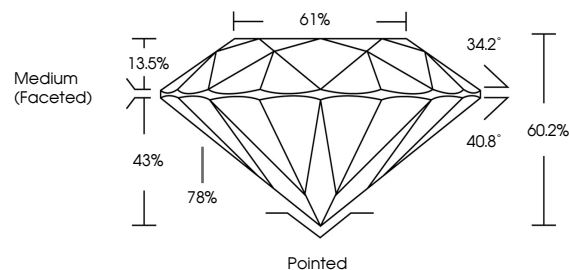
COLOR



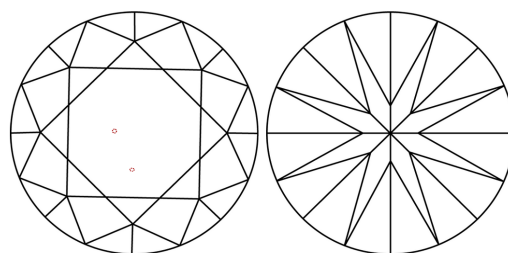
CLARITY

Table with columns for clarity grades: FL, IF, VS 1-2, VS 1-2, SI 1-2, I 1-3 and their corresponding descriptions.

PROPORTIONS

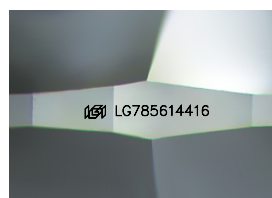


CLARITY CHARACTERISTICS



KEY TO SYMBOLS

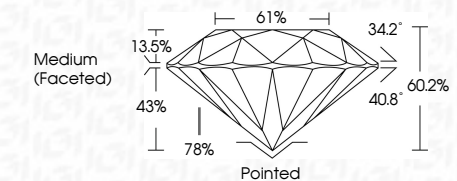
Red symbols indicate internal characteristics. Green symbols indicate external characteristics.



Sample Image Used



March 23, 2026
IGI Report Number: LG785614416
Description: LABORATORY GROWN DIAMOND
Shape and Cutting Style: ROUND BRILLIANT
Measurements: 9.30 - 9.35 X 5.61 MM
GRADING RESULTS
Carat Weight: 3.02 CARATS
Color Grade: E
Clarity Grade: VVS 2
Cut Grade: EXCELLENT



ADDITIONAL GRADING INFORMATION
Polish: EXCELLENT
Symmetry: EXCELLENT
Fluorescence: NONE
Inscription(s): IGI LG785614416
Comments: HEARTS & ARROWS
This Laboratory Grown Diamond was created by Chemical Vapor Deposition (CVD) growth process. Type IIa



Summary table of diamond specifications: March 23, 2026, IGI Report No LG785614416, ROUND BRILLIANT, 9.30 - 9.35 X 5.61 MM, 3.02 CARATS, E, VVS 2, EXCELLENT, 60.2%, 61%, Medium (Faceted), Pointed, EXCELLENT, EXCELLENT, NONE, IGI LG785614416

Comments: HEARTS & ARROWS
This Laboratory Grown Diamond was created by Chemical Vapor Deposition (CVD) growth process. Type IIa