



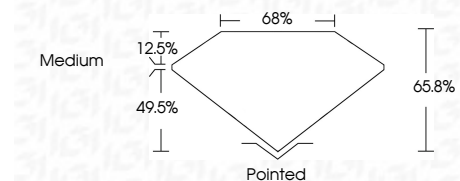
ELECTRONIC COPY

LG785614314
Report verification at igi.org



March 25, 2026
IGI Report Number **LG785614314**
Description **LABORATORY GROWN DIAMOND**
Shape and Cutting Style **HEXAGONAL MODIFIED
BRILLIANT**
Measurements **18.22 X 7.30 X 4.80 MM**

GRADING RESULTS
Carat Weight **4.12 CARATS**
Color Grade **E**
Clarity Grade **VVS 2**



ADDITIONAL GRADING INFORMATION
Polish **EXCELLENT**
Symmetry **EXCELLENT**
Fluorescence **NONE**
Inscription(s) **IGI LG785614314**
Comments: This Laboratory Grown Diamond was created by Chemical Vapor Deposition (CVD) growth process. Type IIa



March 25, 2026
IGI Report No LG785614314
HEXAGONAL MODIFIED BRILLIANT
18.22 X 7.30 X 4.80 MM
4.12 CARATS
E
VVS 2
65.8%
49.5%
Medium
Pointed
EXCELLENT
EXCELLENT
NONE
IGI LG785614314
Comments: This Laboratory Grown Diamond was created by Chemical Vapor Deposition (CVD) growth process. Type IIa

LABORATORY GROWN DIAMOND REPORT

March 25, 2026
IGI Report Number **LG785614314**
Description **LABORATORY GROWN DIAMOND**
Shape and Cutting Style **HEXAGONAL MODIFIED
BRILLIANT**
Measurements **18.22 X 7.30 X 4.80 MM**

GRADING RESULTS

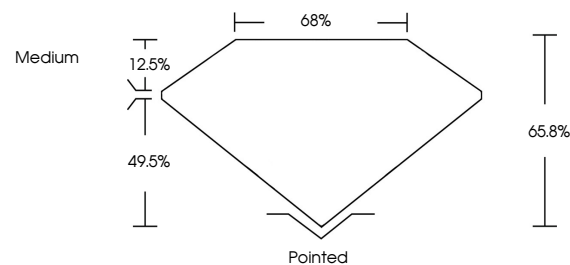
Carat Weight **4.12 CARATS**
Color Grade **E**
Clarity Grade **VVS 2**

ADDITIONAL GRADING INFORMATION

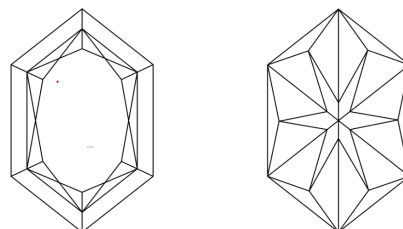
Polish **EXCELLENT**
Symmetry **EXCELLENT**
Fluorescence **NONE**
Inscription(s) **IGI LG785614314**

Comments: This Laboratory Grown Diamond was created by Chemical Vapor Deposition (CVD) growth process. Type IIa

PROPORTIONS

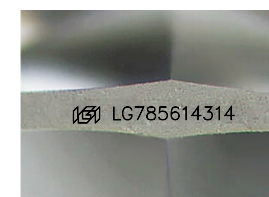


CLARITY CHARACTERISTICS



KEY TO SYMBOLS

Red symbols indicate internal characteristics.
Green symbols indicate external characteristics.



Sample Image Used

COLOR

D E F G H I J Faint Very Light Light

CLARITY

FL	IF	VVS ¹⁻²	VS ¹⁻²	SI ¹⁻²	I ¹⁻³
Flawless	Internally Flawless	Very Very Slightly Included	Very Slightly Included	Slightly Included	Included

