



ELECTRONIC COPY

LG785612325
Report verification at igi.org



March 27, 2026

IGI Report Number **LG785612325**

Description **LABORATORY GROWN DIAMOND**

Shape and Cutting Style **ROUND MODIFIED BRILLIANT**

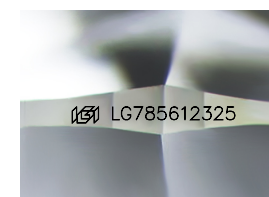
Measurements **9.90 - 9.91 X 5.82 MM**

GRADING RESULTS

Carat Weight **4.09 CARATS**

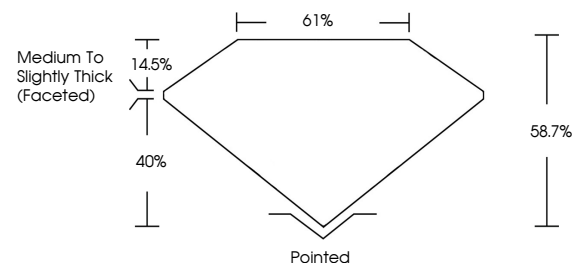
Color Grade **FANCY YELLOW**

Clarity Grade **VS 1**

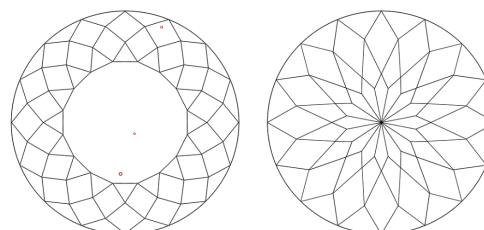


Sample Image Used

PROPORTIONS



CLARITY CHARACTERISTICS



KEY TO SYMBOLS

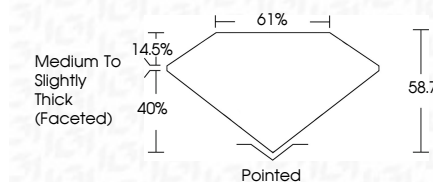
Red symbols indicate internal characteristics.
Green symbols indicate external characteristics.

COLOR

D E F G H I J Faint Very Light Light

CLARITY

FL	IF	VS ¹⁻²	VS ¹⁻²	SI ¹⁻²	I ¹⁻³
Flawless	Internally Flawless	Very Very Slightly Included	Very Slightly Included	Slightly Included	Included



ADDITIONAL GRADING INFORMATION

Polish **EXCELLENT**

Symmetry **EXCELLENT**

Fluorescence **NONE**

Inscription(s) **IGI LG785612325**

Comments: This Laboratory Grown Diamond was created by Chemical Vapor Deposition (CVD) growth process.



March 27, 2026
IGI Report No LG785612325
ROUND MODIFIED BRILLIANT

4.09 CARATS
Carat Weight
FANCY YELLOW
Color Grade

VS 1
Clarity Grade

9.90 - 9.91 X 5.82 MM
Depth
61%
Table
Medium to Slightly Thick (Faceted)
Girdle

Pointed
Culet
EXCELLENT
Polish
EXCELLENT
Symmetry
NONE
Fluorescence
Inscription(s)
IGI LG785612325

Comments: This Laboratory Grown Diamond was created by Chemical Vapor Deposition (CVD) growth process.