



**ELECTRONIC COPY**

LG785611086  
Report verification at [igi.org](http://igi.org)



March 24, 2026  
IGI Report Number **LG785611086**  
Description **LABORATORY GROWN DIAMOND**  
Shape and Cutting Style **EMERALD CUT**  
Measurements **11.40 X 8.13 X 5.54 MM**  
**GRADING RESULTS**  
Carat Weight **5.07 CARATS**  
Color Grade **E**  
Clarity Grade **VVS 2**

March 24, 2026  
IGI Report Number **LG785611086**  
Description **LABORATORY GROWN DIAMOND**  
Shape and Cutting Style **EMERALD CUT**  
Measurements **11.40 X 8.13 X 5.54 MM**

**GRADING RESULTS**

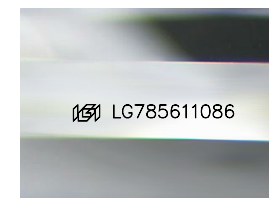
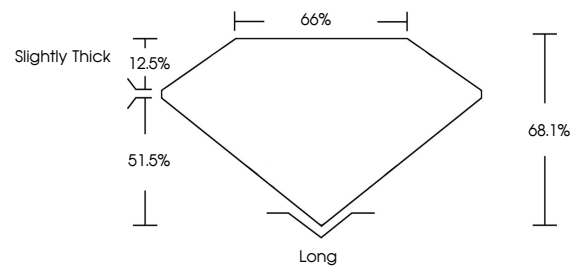
Carat Weight **5.07 CARATS**  
Color Grade **E**  
Clarity Grade **VVS 2**

**ADDITIONAL GRADING INFORMATION**

Polish **EXCELLENT**  
Symmetry **EXCELLENT**  
Fluorescence **NONE**  
Inscription(s) **IGI LG785611086**

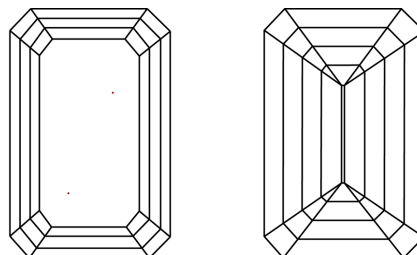
Comments: This Laboratory Grown Diamond was created by Chemical Vapor Deposition (CVD) growth process.  
Type IIa

**PROPORTIONS**



Sample Image Used

**CLARITY CHARACTERISTICS**



**KEY TO SYMBOLS**

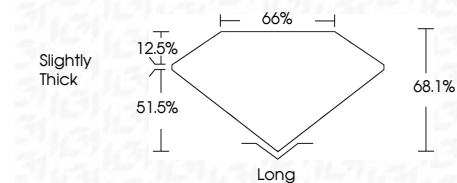
Red symbols indicate internal characteristics.  
Green symbols indicate external characteristics.

**COLOR**

D E F G H I J Faint Very Light Light

**CLARITY**

FL	IF	VVS <sup>1-2</sup>	VS <sup>1-2</sup>	SI <sup>1-2</sup>	I <sup>1-3</sup>
Flawless	Internally Flawless	Very Very Slightly Included	Very Slightly Included	Slightly Included	Included



**ADDITIONAL GRADING INFORMATION**

Polish **EXCELLENT**  
Symmetry **EXCELLENT**  
Fluorescence **NONE**  
Inscription(s) **IGI LG785611086**  
Comments: This Laboratory Grown Diamond was created by Chemical Vapor Deposition (CVD) growth process.  
Type IIa



March 24, 2026  
IGI Report No LG785611086  
**EMERALD CUT**  
11.40 X 8.13 X 5.54 MM  
5.07 CARATS  
E  
VVS 2  
68.1%  
65%  
Slightly Thick  
Long  
EXCELLENT  
EXCELLENT  
NONE  
IGI LG785611086  
Comments: This Laboratory Grown Diamond was created by Chemical Vapor Deposition (CVD) growth process.  
Type IIa