



March 24, 2026

**IGI Report Number** LG785608692  
**ROUND BRILLIANT**  
**LABORATORY GROWN DIAMOND**  
**5.69 - 5.73 X 3.49 MM**

|                |                        |
|----------------|------------------------|
| Carat Weight   | <b>0.70 CARAT</b>      |
| Color Grade    | <b>D</b>               |
| Clarity Grade  | <b>VVS 2</b>           |
| Cut Grade      | <b>IDEAL</b>           |
| Polish         | <b>EXCELLENT</b>       |
| Symmetry       | <b>EXCELLENT</b>       |
| Fluorescence   | <b>NONE</b>            |
| Inscription(s) | <b>IGI LG785608692</b> |

Comments: This Laboratory Grown Diamond was created by Chemical Vapor Deposition (CVD) growth process. Type IIa

**LABORATORY GROWN DIAMOND REPORT**

March 24, 2026  
IGI Report Number **LG785608692**  
Description **LABORATORY GROWN DIAMOND**  
Shape and Cutting Style **ROUND BRILLIANT**  
Measurements **5.69 - 5.73 X 3.49 MM**

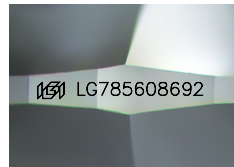
**GRADING RESULTS**

Carat Weight **0.70 CARAT**  
Color Grade **D**  
Clarity Grade **VVS 2**  
Cut Grade **IDEAL**

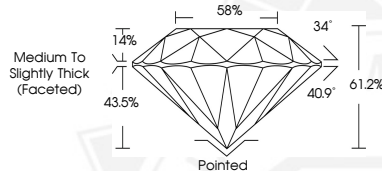
**ADDITIONAL GRADING INFORMATION**

Polish **EXCELLENT**  
Symmetry **EXCELLENT**  
Fluorescence **NONE**  
Inscription(s) **IGI LG785608692**

Comments: This Laboratory Grown Diamond was created by Chemical Vapor Deposition (CVD) growth process.  
Type IIa



Sample Image Used



March 24, 2026

**IGI Report Number** LG785608692  
**ROUND BRILLIANT**  
**LABORATORY GROWN DIAMOND**  
**5.69 - 5.73 X 3.49 MM**

|                |                        |
|----------------|------------------------|
| Carat Weight   | <b>0.70 CARAT</b>      |
| Color Grade    | <b>D</b>               |
| Clarity Grade  | <b>VVS 2</b>           |
| Cut Grade      | <b>IDEAL</b>           |
| Polish         | <b>EXCELLENT</b>       |
| Symmetry       | <b>EXCELLENT</b>       |
| Fluorescence   | <b>NONE</b>            |
| Inscription(s) | <b>IGI LG785608692</b> |

Comments: This Laboratory Grown Diamond was created by Chemical Vapor Deposition (CVD) growth process. Type IIa



THIS DOCUMENT WAS PRODUCED WITH THE FOLLOWING SECURITY MEASURES: SPECIAL DOCUMENT PAPER, INK SCREENS, WATERMARK, BACKGROUND DESIGNS, HOLOGRAM AND OTHER SECURITY FEATURES NOT LISTED AND DO EXCEED DOCUMENT SECURITY INDUSTRY GUIDELINES.