



March 24, 2026

**IGI Report Number** LG785608670  
**ROUND BRILLIANT**  
**LABORATORY GROWN DIAMOND**  
**4.07 - 4.10 X 2.44 MM**

**Carat Weight** 0.25 CARAT  
**Color Grade** D  
**Clarity Grade** VVS 2  
**Cut Grade** EXCELLENT  
**Polish** EXCELLENT  
**Symmetry** EXCELLENT  
**Fluorescence** NONE  
**Inscription(s)** IGI LG785608670

Comments: This Laboratory Grown Diamond was created by Chemical Vapor Deposition (CVD) growth process. Type IIa

**LABORATORY GROWN DIAMOND REPORT**

March 24, 2026  
IGI Report Number **LG785608670**  
Description **LABORATORY GROWN DIAMOND**  
Shape and Cutting Style **ROUND BRILLIANT**  
Measurements **4.07 - 4.10 X 2.44 MM**

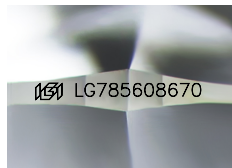
**GRADING RESULTS**

**Carat Weight** 0.25 CARAT  
**Color Grade** D  
**Clarity Grade** VVS 2  
**Cut Grade** EXCELLENT

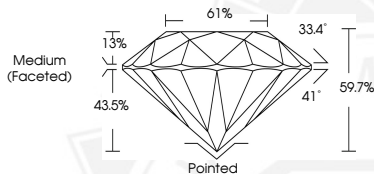
**ADDITIONAL GRADING INFORMATION**

**Polish** EXCELLENT  
**Symmetry** EXCELLENT  
**Fluorescence** NONE  
**Inscription(s)** IGI LG785608670

Comments: This Laboratory Grown Diamond was created by Chemical Vapor Deposition (CVD) growth process. Type IIa



Sample Image Used



March 24, 2026

**IGI Report Number** LG785608670  
**ROUND BRILLIANT**  
**LABORATORY GROWN DIAMOND**  
**4.07 - 4.10 X 2.44 MM**

**Carat Weight** 0.25 CARAT  
**Color Grade** D  
**Clarity Grade** VVS 2  
**Cut Grade** EXCELLENT  
**Polish** EXCELLENT  
**Symmetry** EXCELLENT  
**Fluorescence** NONE  
**Inscription(s)** IGI LG785608670

Comments: This Laboratory Grown Diamond was created by Chemical Vapor Deposition (CVD) growth process. Type IIa



THIS DOCUMENT WAS PRODUCED WITH THE FOLLOWING SECURITY MEASURES: SPECIAL DOCUMENT PAPER, INK SCREENS, WATERMARK, BACKGROUND DESIGNS, HOLOGRAM AND OTHER SECURITY FEATURES NOT LISTED AND DO EXCEED DOCUMENT SECURITY INDUSTRY GUIDELINES.